

FAULKNER COUNTY

ALLEN DODSON
COUNTY JUDGE

801 LOCUST STREET • CONWAY, AR 72034

FILED

APR 13 2023

MARGARET DARTER
FAULKNER COUNTY CLERK

BY C. Walters DC

IN THE COUNTY COURT OF FAULKNER COUNTY, ARKANSAS

COURT ORDER NO. 23-171

IN THE MATTER OF
REMOVAL OF COUNTY PROPERTY
FROM FAULKNER COUNTY INVENTORY

After having reviewed the documents provided by the Faulkner County Assessor's Office, the County Court hereby Finds, and Orders as follows per A.C.A § 14-16-106:

The vehicle listed below is considered a total loss due to an accident. Therefore, the vehicle should be removed from county inventory.

Department: Sheriff

<u>Item Description</u>	<u>VIN/Serial No.</u>	<u>Inv. No.</u>	<u>Tag No.</u>	<u>Est. Value</u>
2018 Dodge Charger	2C3CDXAT2JH257875	V.2.117		\$0

IT IS SO ORDERED



Allen Dodson
Faulkner County Judge

Date: 4-13-23

FAULKNER COUNTY ASSESSOR'S OFFICE
KRISSEY LEWIS, ASSESSOR

806 FAULKNER STREET
CONWAY, AR 72034
PHONE (501) 450-4905
FAX (501) 450-4908
E-MAIL krissy.lewis@faulknercounty.org

March 23, 2023

Allen Dodson, Faulkner County Judge
Angie Wooley, Faulkner County Sheriff's Office

RE: Inventory

Dear Judge Dodson and Ms. Wooley

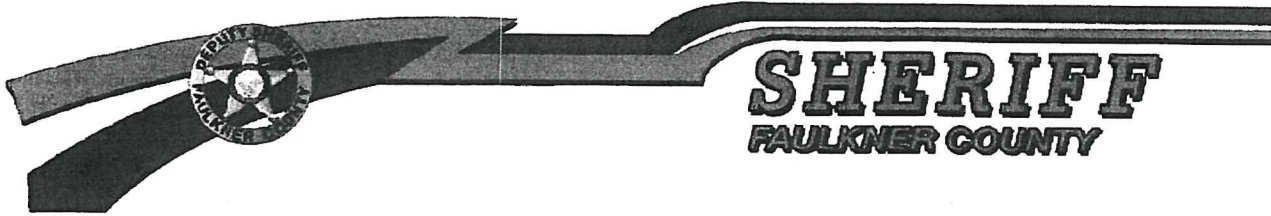
The Faulkner County Assessor's Office has been asked to prepare a letter to remove the following vehicle from County Inventory for the Sheriff's office. According to the appraisal evaluation, the vehicle is considered a total loss due to an accident. Therefore, the vehicle listed below needs to be removed from County Inventory.

<u>Item Description</u>	<u>Vin Number</u>	<u>Inventory Number</u>
2018 Dodge Charger	2C3CDXAT2JH257875	V.2.117

Sincerely,



Donna Beck
Chief Deputy Assessor



Sheriff Tim Ryals

Chief Deputy Chad Wooley

March 20, 2023

Jim Baker, County Judge

Krissy Lewis, County Assessor

Dear Judge Baker & Ms. Lewis,

I am requesting that the County Judge order the following property listed below to be removed from the inventory list for our department:

<u>Item Description</u>	<u>Serial/VIN #</u>	<u>Inventory #</u>	<u>Tag #</u>	<u>Reason for Removal</u>
Unit# 1812-2018 Dodge Charger	2C3CDXAT2JH257875			Totaled 2-16-2023, AAC PAID CK#21949, AAC Claim# AAC-0041497, Treasurer's Receipt# 20959

Sincerely,

Angie Wooley
Finance Officer

Treasurer
Scott Sanson
801 Locust Street
CONWAY, AR 72034

Treasurer's Receipt

Receipt Number: 20959

page 1 of 1



Entry Date: 03/17/2023

Received From: Association of Arkansas Counties Source: Total Loss Payment 2018 Charger #7875 FCSO Claim #AAC-0041497 <i>Unit # 1812</i>	Receipt Date: 03/17/2023
Cashier: Lisa Cook	

Payment Type	Amount	Account #	Description	Amount
CK 21949	16,903.00	3407.8718	Insurance Proceeds	16,903.00

Authorized Signature: <i>Scott Sanson</i>	Total Receipt: 16,903.00
---	------------------------------------

20-104

21949



ASSOCIATION OF ARKANSAS COUNTIES
RISK MANAGEMENT FUND/CLAIMS ACCT.
1415 WEST THIRD STREET
LITTLE ROCK, ARKANSAS 72201

BANK OZK
81-727/829

PAY

Sixteen Thousand Nine Hundred Three and 00/100 dollars

TO THE
ORDER OF

Faulkner County
C/O Allen Dodson, County Judge
801 Locust St
Conway, AR 72034

DATE
03/13/2023

AMOUNT
\$16,903.00

VOID AFTER 60 DAYS

Allen Dodson

AUTHORIZED SIGNATURE

Security features. Details on back.

⑈021949⑈ ⑆082907273⑆ 2038017253⑈

21949

To fund 3407.8762

Faulkner County
C/O Allen Dodson, County Judge
801 Locust St
Conway, AR 72034

21949

Member

Faulkner County - Sheriff's Dept.

Claimant

Sheriffs Dept Faulkner County

Check Amt: \$16,903.00
Check Date: 03/13/2023
Claimant: Sheriffs Dept Faulkner County
Claim No: AAC-0041497
Date of Loss: 02/16/2023
Adjuster: Jacob Trumble
Invoice Number:
Payee Name: Faulkner County
Payment Type: Partial Loss (Collision)
Service Dates: 2023-03-09 thru 2023-03-09

Payable Comment

Total Loss Payment 2018 Charger #7875

Unit # 1812

Eclipse Appraisal Inc
PO Box 84, Solgohachia, AR 72156

TOTAL LOSS

Estimate ID
13065911
Original

Claim Number
AAC-0041497

Supplements to: curtis@eclipseappraisal.com
Phone: 501-977-4436

Owner
Faulkner County Sheriff's Dept.
801 Locust St.
Conway, AR 72034
(501) 450-4914 (Work)
chad.wolley@fcso.ar.gov

Insured
Faulkner County Sheriff's Dept.

Appraiser
Curtis Russell
curtis@eclipseappraisal.com

Classification
Field

Arkansas Association of Counties

Payer Insurance	Loss Type Collision	Claim Number AAC-0041497	Adjuster Jacob Trumble (501) 375-8805 (Work) jtrumble@arcounties.org
Deductible 500.00 - Not Waived	Reported Date 03/02/2023	Loss Date 02/16/2023	Inspection Site Pro Auto Towing 6 Ranchette Rd Conway, AR 72032 (501) 513-9200 (Work)

Inspection Date
3/2/2023

2018 Dodge Charger Police 4 Door Sedan 5.7L 8 Cyl Gas Injected 5 Speed Auto Trans RWD

Unit # 1812

Exterior Color PW7 (Bright White)	Interior Color Black	License AR-748XHA	VIN 2C3CDXAT2JH257875
--------------------------------------	-------------------------	----------------------	--------------------------

Condition Good	Drivable No	Odometer 128216	Production Date 03/2018
-------------------	----------------	--------------------	----------------------------

Mitchell Service Code
911667

Primary Point of Impact Front (12)	Secondary Point(s) of Impact Right Front Corner (1), Right Front Side (2), Right Side (3), Right Rear Side (4), Right Rear Corner (5), Left Rear Corner (7), Left Rear Side (8), Left Side (9), Left Front Side (10), Left Front Corner (11), All Over (19)
---------------------------------------	--

Prior Damage Notes
None Noted

Options

Anti-Lock Brake Sys.	Cruise Control	FM Radio	Manual Air Condition	Power Brake
----------------------	----------------	----------	----------------------	-------------

Power Driver Seat
Tilt Steering Column

Power Lock
Tire Inflation/Pressure Monitor

Power Steering

Power Window

Rear Window Defogger

Faulkner County Sheriff's Dept. | 2018 Dodge Charger Police

Parts Profile
Little Rock-Revised

Parts Profile Version
6.0

Line #	Description	LABOR			PART				
		Operation	Type	Total Units	Type	Number	Qty	Total Price	Tax
Front Bumper									
1	AUTO Frt Bumper Cover Assy	Overhaul	Body	4.0#	Existing				
2	102899 Frt Bumper Cover	Remove / Replace	Body	INC#	Qual Recycled Part	B30110	1	\$750.00	Yes
3	900510 Line Markup 25.0%							\$187.50	
4	AUTO Frt Bumper Cover	Refinish Only	Refinish	2.7# C					
5	100935 R Frt Bumper Bracket	Remove / Replace	Body	INC#	New	68226532AA	1	\$35.95	Yes
6	100936 L Frt Bumper Bracket	Remove / Replace	Body	INC#	New	68226533AA	1	\$35.95	Yes
7	100937 R Frt Bumper Support Bracket	Remove / Replace	Body	INC#	New	68213539AC	1	\$10.20	Yes
8	AUTO Frt Bumper Cover	Remove / Install	Body	INC#					
9	100938 L Frt Bumper Support Bracket	Remove / Replace	Body	INC#	New	68213538AC	1	\$10.20	Yes
10	100939 R Frt Otr Bumper Reinforcement	Remove / Replace	Body	INC	New	68226544AB	1	\$35.95	Yes
11	100940 L Frt Otr Bumper Reinforcement	Remove / Replace	Body	INC	New	68226545AB	1	\$35.95	Yes
Hood									
12	100559 Hood Panel (Alum)	Remove / Replace	Body	1.6	Qual Recycled Part	B30110	1	\$450.00	Yes
13	900510 Line Markup 25.0%							\$112.50	
14	AUTO Hood Outside	Refinish Only	Refinish	2.8 C					
15	AUTO Add For Hood Underside	Refinish Only	Refinish	1.4 C					
16	100572 R Hood Hinge	Remove / Replace	Body	0.3#	New	55113550AG	1	\$93.30	Yes
17	AUTO R Hinge	Refinish Only	Refinish	0.5 C					
18	AUTO Hood Assy	Remove / Install	Body	INC#					
19	100573 L Hood Hinge	Remove / Replace	Body	0.3#	New	55113551AG	1	\$93.30	Yes
20	AUTO L Hinge	Refinish Only	Refinish	0.5 C					
21	100592 Hood Latch	Remove / Replace	Body	INC#	New	55113787AB	1	\$102.00	Yes
Cooling									
22	100491 Cooling Radiator	Remove / Replace	Body	INC#	New	68050126AB	1	\$632.00	Yes
23	AUTO Vacuum-Fill & Bleed Cooling System	Remove / Replace	Body	0.6					

Line #	Description	LABOR			PART					
		Operation	Type	Total Units	Type	Number	Qty	Total Price	Tax	
A/C / Heater / Ventilation										
24	101057	A/C Condenser/Trans Cooler -M	Remove / Replace	Mechanical	1.3#	New	68085784AA	1	\$608.00	Yes
25	AUTO	Evacuate & Recharge A/C - M	Remove / Replace	Mechanical	1.4					
Front Fender										
26	101042	R Fender Panel	Remove / Replace	Body	0.9#	Qual Recycled Part	\$PX136	1	\$220.00	Yes
27	900510	Line Markup 25.0%							\$55.00	
28	AUTO	R Fender Outside	Refinish Only	Refinish	1.6 C					
29	AUTO	R Add To Edge Fender	Refinish Only	Refinish	0.5 C					
30	101043	L Fender Panel	Remove / Replace	Body	0.9#	Qual Recycled Part	\$PX169	1	\$205.00	Yes
31	900510	Line Markup 25.0%							\$51.25	
32	AUTO	L Fender Outside	Refinish Only	Refinish	1.6 C					
33	AUTO	L Add To Edge Fender	Refinish Only	Refinish	0.5 C					
34	102438	R Fender Splash Shield	Remove / Replace	Body	INC	New	68205936AH	1	\$144.00	Yes
35	102439	L Fender Splash Shield	Remove / Replace	Body	INC	New	68205937AH	1	\$144.00	Yes
Front Inner Structure										
36	100524	Frt Body Upper Crossmember	Remove / Replace	Body	2.0#	Aftermarket Certified	CH1225280C	1	\$291.00	Yes
37	AUTO	Headlamps	Check / Adjust	Body	0.4					
38	AUTO	Upr Rad Supt Crossmember	Refinish Only	Refinish	1.5					
39	AUTO	Add To R&I/R&R Mechanical Components -M	Remove / Replace	Mechanical	0.5#					
40	100526	Frt Body Lower Tie Bar	Remove / Replace	Body	0.5	Aftermarket Certified	CH1225198C	1	\$265.00	Yes
41	AUTO	Lower Tie Bar	Refinish Only	Refinish	1.0					
42	100447	Frt Body Closing Panel	Remove / Replace	Body	INC#	Aftermarket Certified	CH1224101C	1	\$166.00	Yes
43	AUTO	R Apron/Lower Side Rail Complete	Refinish Only	Refinish	1.5	Existing				
44	AUTO	L Apron/Lower Side Rail Complete	Refinish Only	Refinish	1.5	Existing				
45	100540	R Frt Body Front Apron Panel (Steel/Hss)	Remove / Replace	Body	5.5	New	68444164AD	1	\$186.00	Yes
46	AUTO	R Front Apron Panel	Refinish Only	Refinish	INC					
47	100541	L Frt Body Front Apron Panel (Steel/Hss)	Remove / Replace	Body	5.5	New	68444165AD	1	\$207.00	Yes
48	AUTO	L Front Apron Panel	Refinish Only	Refinish	INC					
49	100547	R Frt Body Side Rail Assy (HSS) -S	Remove / Replace	Body	13.5#	New	68504488AA	1	\$861.00	Yes
50	AUTO	R Lower Side Rail Complete	Refinish Only	Refinish	INC	Existing				

Line #	Description	LABOR			PART					
		Operation	Type	Total Units	Type	Number	Qty	Total Price	Tax	
51	100548 L Frt Body Side Rail Assy (HSS) -S	Remove / Replace	Body	13.5#	New	68504489AA	1	\$347.00	Yes	
52	AUTO L Lower Side Rail Complete	Refinish Only	Refinish	INC	Existing					
53	102257 Sub-Frame -M	Remove / Replace	Mechanical	6.0#	Qual Recycled Part	B00047	1	\$400.00	Yes	
54	900510 Line Markup 25.0%							\$100.00		
Air Bag System										
55	102552 Air Bag Module-Driver Front -M	Remove / Replace	Mechanical	INC	New	6RS491VXAB	1	\$965.00	Yes	
56	102960 Air Bag Clockspring -M	Remove / Replace	Mechanical	INC	New	7HJ33DX9AA	1	\$420.00	Yes	
57	102261 Air Bag Module-Passenger Front -M	Remove / Replace	Mechanical	INC#	New	68282914AD	1	\$723.00	Yes	
58	AUTO Instrument Panel Assy -M	Remove / Install	Mechanical	INC						
59	100052 Air Bag Driver Knee Module -M	Remove / Replace	Mechanical	0.7	New	5057792AH	1	\$334.00	Yes	
60	101544 Air Bag Control Module -M	Remove / Replace	Mechanical	0.5#	New	[68371749AA]	1	\$389.00	Yes	
61	AUTO Console	Remove / Install	Body	0.6						
62	100397 R Frt Air Bag Impact Sensor -M	Remove / Replace	Mechanical	INC#	New	56054085AA	1	\$229.00	Yes	
63	AUTO Air Cleaner Assy	Remove / Install	Body	0.5						
64	100398 L Frt Air Bag Impact Sensor -M	Remove / Replace	Mechanical	INC#	New	56054085AA	1	\$229.00	Yes	
65	100403 R Air Bag Seat Position Sensor -M	Remove / Replace	Mechanical	0.3	New	56054036AB	1	\$24.35	Yes	
66	100404 L Air Bag Seat Position Sensor -M	Remove / Replace	Mechanical	0.3	New	56054036AB	1	\$24.35	Yes	
67	100407 R Air Bag Side Curtain Module -M	Remove / Replace	Mechanical	0.8#	New	68222742AG	1	\$775.00	Yes	
68	AUTO Roof Headliner	Remove / Install	Body	INC#						
69	100408 L Air Bag Side Curtain Module -M	Remove / Replace	Mechanical	INC#	New	68222743AG	1	\$336.00	Yes	
70	100409 R Air Bag Support	Remove / Replace	Body	0.0	New	68044050AC	1	\$63.90	Yes	
71	100410 L Air Bag Support	Remove / Replace	Body	0.0	New	68044051AC	1	\$63.40	Yes	
72	100417 Air Bag Module-Passenger Seat -M	Remove / Replace	Mechanical	0.6#	New	5108076AF	1	\$650.00	Yes	
73	100418 Air Bag Module-Drivers Seat -M	Remove / Replace	Mechanical	0.6#	New	5108077AF	1	\$650.00	Yes	
74	100419 R Frt Air Bag Side Impact Sensor -M	Remove / Replace	Mechanical	0.3#	New	56054085AA	1	\$229.00	Yes	
75	AUTO R Frt Door Trim Panel	Remove / Install	Body	INC						
76	100421 R Ctr Air Bag Side Impact Sensor -M	Remove / Replace	Mechanical	0.4#	New	56054085AA	1	\$229.00	Yes	
77	100046 R Rear Air Bag Side Impact Sensor -M	Remove / Replace	Mechanical	0.4#	New	56054085AA	1	\$229.00	Yes	
78	100047 L Rear Air Bag Side Impact Sensor -M	Remove / Replace	Mechanical	0.4#	New	56054085AA	1	\$229.00	Yes	

Steering Wheel / Column

LABOR

PART

Line #	Description	Operation	Type	Total Units	Type	Number	Qty	Total Price	Tax
79	101355 Steering Wheel -M	Remove / Replace	Mechanical	INC	New	[6MS261X9AA]	1	\$649.00	Yes
80	100654 Steering Column Assembly - M	Remove / Replace	Mechanical	2.0	New	68140569AG	1	\$1,315.00	Yes
81	102143 Steering Shaft Coupling -M	Remove / Replace	Mechanical	0.0	New	[55057340AB]	1	\$248.00	Yes
Windshield									
82	102650 R W/Shield Pillar Garnish	Remove / Replace	Body	INC	New	[5LN22DX9AF]	1	\$140.00	Yes
83	102651 L W/Shield Pillar Garnish	Remove / Replace	Body	INC	New	[5LN23DX9AF]	1	\$127.00	Yes
Instrument Panel									
84	102627 Inst Panel -M	Remove / Replace	Mechanical	7.5	New	[6DJ56DX9AD]	1	\$1,575.00	Yes
Rocker / Pillars / Floor									
85	101397 R Ctr Pillar Trim Panel	Remove / Replace	Body	INC	New	1KL28DX9AI	1	\$243.00	Yes
86	101398 L Ctr Pillar Trim Panel	Remove / Replace	Body	INC	New	1KL29DX9AI	1	\$243.00	Yes
Front Seat									
87	102299 Pass Side Seat Back Cover	Remove / Replace	Body	2.5#	New	[5SZ22DX9AB]	1	\$555.00	Yes
88	102301 Pass Side Seat Back Cushion	Remove / Replace	Body	INC#	New	[68110546AB]	1	\$179.00	Yes
89	102324 Pass Side Seat Support	Remove / Replace	Body	INC#	New	[68102980AA]	1	\$40.15	Yes
90	102302 Pass Side Seat Back Frame	Remove / Replace	Body	INC#	New	[68104427AA]	1	\$1,000.00	Yes
91	102303 Pass Side Seat Back Panel	Remove / Replace	Body	INC#	New	1UY02DX9AC	1	\$293.00	Yes
92	102313 Driver Side Seat Back Cover	Remove / Replace	Body	2.5#	New	[5SZ22DX9AB]	1	\$555.00	Yes
93	102315 Driver Side Seat Back Cushion	Remove / Replace	Body	INC#	New	[68156158AC]	1	\$228.00	Yes
94	102325 Driver Side Seat Support	Remove / Replace	Body	INC#	New	[68102980AA]	1	\$40.15	Yes
95	102317 Driver Side Seat Back Frame	Remove / Replace	Body	INC#	New	[68159139AA]	1	\$1,120.00	Yes
96	102318 Driver Side Seat Back Panel	Remove / Replace	Body	INC#	New	1UW23DX9AC	1	\$302.00	Yes
Seat Belts									
97	101405 R Frt Seat Belt	Remove / Replace	Body	1.2#	New	[1HZ06DX9AI]	1	\$341.00	Yes
98	101406 L Frt Seat Belt	Remove / Replace	Body	1.2#	New	[1HZ05DX9AI]	1	\$332.00	Yes
99	101475 R Frt Seat Belt Adjuster	Remove / Replace	Body	0.0	New	68080745AD	1	\$57.90	Yes
100	101476 L Frt Seat Belt Adjuster	Remove / Replace	Body	0.0	New	68080745AD	1	\$57.90	Yes
101	102875 R Frt Seat Belt Buckle	Remove / Replace	Body	0.2#	New	[6MS001X9AA]	1	\$243.00	Yes
102	AUTO R Seat Assy	Remove / Install	Body	0.4					
103	102876 L Frt Seat Belt Buckle	Remove / Replace	Body	0.2#	New	[6MS011X9AA]	1	\$229.00	Yes

Line #	Description	LABOR			PART				
		Operation	Type	Total Units	Type	Number	Qty	Total Price	Tax
104 AUTO	L Seat Assy	Remove / Install	Body	0.4					
Front Door									
105 101424	R Frt Door Shell (Steel/Hss)	Remove / Replace	Body	5.0#	Qual Recycled Part	015220	1	\$700.00	Yes
106 900510	Line Markup 25.0%							\$175.00	
107 AUTO	R Frt Door Outside	Refinish Only	Refinish	1.9 C					
108 AUTO	R Frt Add For Jambs & Interior	Refinish Only	Refinish	1.0 C					
109 101425	L Frt Door Shell (Steel/Hss)	Remove / Replace	Body	5.0#	Qual Recycled Part	\$PX033	1	\$685.00	Yes
110 900510	Line Markup 25.0%							\$171.25	
111 AUTO	L Frt Door Outside	Refinish Only	Refinish	1.9 C					
112 AUTO	L Frt Add For Jambs & Interior	Refinish Only	Refinish	1.0 C					
Rear Door									
113 100730	R Rear Door Shell (Steel/Hss)	Remove / Replace	Body	5.0#	Qual Recycled Part	\$PW688	1	\$480.00	Yes
114 900510	Line Markup 25.0%							\$120.00	
115 AUTO	R Rear Door Outside	Refinish Only	Refinish	1.8 C					
116 AUTO	R Rear Add For Jambs & Interior	Refinish Only	Refinish	1.0 C					
117 100731	L Rear Door Shell (Steel/Hss)	Remove / Replace	Body	5.0#	Qual Recycled Part	230019	1	\$300.00	Yes
118 900510	Line Markup 25.0%							\$75.00	
119 AUTO	L Rear Door Outside	Refinish Only	Refinish	1.8 C					
120 AUTO	L Rear Add For Jambs & Interior	Refinish Only	Refinish	1.0 C					
Roof									
121 101694	Roof Panel	Repair	Body	8.0*	Existing				
122 AUTO	Roof Panel Outside	Refinish Only	Refinish	2.3 C	Existing				
123 102695	Roof Headliner	Remove / Replace	Body	4.4#	New	[6RG15DX9AC]	1	\$1,165.00	Yes
124 AUTO	WindshIELD	Remove / Install	Glass	3.0#					
Back Window									
125 102362	Back Window Glass	Remove / Replace	Glass	INC#	Aftermarket New	DB12647GTY	1	\$769.61	Yes
Quarter Panel									
126 100290	R Quarter Outer Panel	Repair	Body	10.0*#	Existing				
127 AUTO	R Quarter Panel Outside	Refinish Only	Refinish	1.9 C	Existing				
128 100291	L Quarter Outer Panel	Remove / Replace	Body	17.7#	New	68265443AG	1	\$1,050.00	Yes
129 AUTO	L Quarter Panel Outside	Refinish Only	Refinish	1.9 C					
130 AUTO	L Add For Pillar	Refinish Only	Refinish	0.5 C					

Line #	Description	LABOR			PART				
		Operation	Type	Total Units	Type	Number	Qty	Total Price	Tax
131 AUTO	L Quarter Panel Edge	Refinish Only	Refinish	0.5 C					
132 AUTO	L Add To R&L/R&R Side Curtain Air Bags-M	Remove / Replace	Mechanical	0.8#					
133 AUTO	L Add w/Air Bag Sensor -M	Remove / Replace	Mechanical	0.3					
134 100791	R Rear Quarter Pillar Trim Panel	Remove / Replace	Body	INC	New	[1KL82DX9AD]	1	\$112.00	Yes
135 100792	L Rear Quarter Pillar Trim Panel	Remove / Replace	Body	INC	New	[1KL83DX9AD]	1	\$112.00	Yes
Rear Lamps:									
136 100462	R Rear Combination Lamp	Remove / Install	Body	INC#	Existing				
Rear Bumper:									
137 100894	Rear Bumper Cover	Remove / Install	Body	INC#	Existing				
Additional Costs & Materials									
138 AUTO	Paint/Materials	Additional Cost						\$1,863.00*	Yes
Additional Operations									
139 AUTO	Clear Coat	Additional Operation	Refinish	5.3				\$0.00	

* Judgment Item
T Included in Two Tone Calculation
Labor Note Applies
d Discontinued by Manufacturer
C Included in Clear Coat Calculation
A Included in Clear Coat and Two Tone Calculation
r CEG R&R Time Used for this Labor Operation
[] Verify the part number and price before ordering

Parts Vendors

KEYSTONE KEYSIQ
25631 INTERSTATE 30
BRYANT AR 72022
(501) 847-7730 (Work)
(877) 847-1200 (Work)

KEYSTONE-INS QUALITY PRT
25631 INTERSTATE 30
BRYANT AR 72022
(501) 847-7730 (Work)
(877) 847-1200 (Work)

Line	Part #	Total Price	Line	Part #	Total Price
40	CH1225198C	\$265.00	36	CH1225280C	\$291.00
42	CH1224101C	\$166.00			

Disclaimer: This estimate has been prepared based on the use of aftermarket crash parts supplied by a source other than the manufacturer of your motor vehicle. The aftermarket crash parts used in the preparation of this estimate are warranted by the manufacturer or distributor of such parts instead of the manufacturer of your vehicle.

Recycled Part Vendors

Crump's Jacksonville Auto Salvage And Mo
2966 Arkansas Highway 294
Jacksonville AR 72076
(501) 982-6647 (Work)

(501) 982-0305 (Work)

Line	Part #	Total Price	Vehicle	Description	VIN
117	230019	\$300.00	2013 Dodge CHARGER	L.	2C3CDXAT0DH523527

Supplier Notes: 000,LH,WHT,4DR,PW,PL,CLR,08/12

J.B.'s Auto Salvage, Inc
7018 Peters Rd.
Jacksonville AR 72076
(800) 325-4442 (Work)
(501) 985-1680 (Work)

Line	Part #	Total Price	Vehicle	Description	VIN
105	015220	\$700.00	2015 Dodge CHARGER	R.	2C3CDXBGXFH784961

Supplier Notes: 000 SLV 4DR PW KEYL PRV RM 05/201

LKQ-Keystone- Preferred
650 Simon Road
Conway AR 72032
(800) 233-3513 (Work)
(501) 336-8654 (Work)

Line	Part #	Total Price	Vehicle	Description	VIN
26	\$PX136	\$220.00	2017 Dodge CHARGER	R.	2C3CDXBG7HH547508
Supplier Notes: RH,R.					
30	\$PX169	\$205.00	2016 Dodge CHARGER	L.	2C3CDXBG8GH297808
Supplier Notes: LH,L.					
109	\$PX033	\$685.00	2017 Dodge CHARGER	L.	2C3CDXHG1HH634621
Supplier Notes: LH,L.					
113	\$PW688	\$480.00	2013 Dodge CHARGER	R.	2C3CDXCTXDH612793
Supplier Notes: RH,R.					

Pratt's Auto Salvage and Sales
170 Industrial Drive PO Box 9
Hoxie AR 72433
(800) 348-6680 (Work)
(870) 886-1510 (Work)

Line	Part #	Total Price	Vehicle	Description	VIN
2	B30110	\$750.00	2017 Dodge CHARGER	RECESSED HOOD LINE IN UPPER COVER (ABOVE UPPER GRILLE)	2C3CDXKT8HH566243
Supplier Notes: 000,BLK,4DR,SCRATCHES					
12	B30110	\$450.00	2017 Dodge CHARGER	W/O HOOD SCOOP	2C3CDXKT8HH566243
Supplier Notes: 000,BLK,4DR					
53	B00047	\$400.00	2019 Dodge CHARGER	POLICE PACKAGE	2C3CDXAT1KH650302
Supplier Notes: REAR,RWD					

Disclaimer: Recycled part pricing may represent either actual pricing (the price at which the recycler is willing to sell the part for in its existing condition) or undamaged pricing (the price at which the recycler would sell the part if it was in undamaged condition). If you are unsure, please contact the automotive recycler. Some parts located for this quote may be interchangeable but may not be an exact match. If you are unsure, please contact the automotive recycler.

Estimate Totals

Labor	Units	Rate	Sublet Add'l Amount	Totals
Body Labor	119.3	\$62.00		\$7,396.60
Refinish Labor	41.4	\$62.00		\$2,566.80
Glass Labor	3.0	\$62.00		\$186.00
Mechanical Labor	25.1	\$95.00		\$2,384.50
Total Labor	188.8			\$12,533.90
			Taxable	\$12,533.90
			Tax 7.0000%	\$877.37
			Non-Taxable	\$0.00
			Labor Total	\$13,411.27
Parts	Amount			
Taxable Parts	\$28,607.51			\$28,607.51
			Parts Adjustments	\$1,047.50
			Tax 7.0000%	\$2,075.85
			Non-Taxable	\$0.00
			Parts Total	\$31,730.86
Costs	Amount			
Other Additional Costs	\$0.00			\$0.00
Paint Materials	\$1,863.00			\$1,863.00
			Taxable	\$1,863.00
			Tax 7.0000%	\$130.41
			Non-Taxable	\$0.00
Paint Materials Rate: \$45.00			Costs Total	\$1,993.41
Rate Max: 99.9 units				
Additional Rate: \$0.00				
Gross Totals	Amount			
Gross Total	\$47,135.54			\$47,135.54
			Taxable	\$44,051.91
			Tax	\$3,083.63
			Non-Taxable	\$0.00
			Gross Total	\$47,135.54
Adjustments	Amount			
Deductible	-\$500.00			-\$500.00
Total Customer Responsibility				-\$500.00
			Net Estimate Total	\$46,635.54

DISCLAIMER: This estimate has been prepared by an independent appraisal service. Receipt of this estimate copy from the appraisal service is not an authorization for repairs or a guarantee of payment.
*****ALL SUPPLEMENTS REQUIRE PRIOR APPROVAL BEFORE REPAIRS BEGIN OR PARTS ARE ORDERED*****
 All supplements will require all parts invoices for the entire repair. Failure to obtain approval may result in the denial of the payment for any and all supplemental repairs.
 -Please present this estimate to the shop of your choice

-Only you can authorize repairs to your vehicle

-If the shop has any questions about the estimate or if the shop encounters any supplemental damage, they should contact the appraiser's name listed on this estimate

Disclaimer: Any person who knowingly presents a false or fraudulent claim for payment of a loss or benefit or knowingly presents false information in an application for insurance is guilty of a crime and may be subject to fines and confinement in prison.

Eclipse Appraisal Inc.

Total Loss Evaluation

Claim Rep Name/ID Number: Jacob Trumble Claim Number: AAC-0041497
 Insured's Name: Faulkner County Sheriff's Dept. Owner's Name: Same
 Phone: 501-450-4914 Zip Code: 72032 Type of Loss: T(Theft) C(Other)

Vehicle ID Number: 2C3CDXAT2JH257875 Unit #1812
 State: AR Loss Date: 2/16/2023 Year: 2018 Make: Dodge Model: Charger
 Body Style: 2DR 4DR Lift/Hatchback Convertible Wagon Pickup Van Utility Motorcycle
 1/2 Ton 3/4 Ton 1 Ton Shortbed Longbed Cab & Chassis Fleetside Fenderside
 Engine Detail: Size: 5.7 Cylinders: 3 4 6 8 10 12 Turbo Diesel
 Transmission: AT S6 S5 S4 S3 OD 4W Mileage: 128216

- POWER OPTIONS**
 PS Pwr Steering
 PB Pwr Brakes
 PG Pwr Windows
 PL Pwr Locks
 PC Pwr Pass Seat

- DÉCOR/CONVENIENCE**
 AC Air Conditioner
 RD Rear Defogger
 TW Tilt Wheel
 CC Cruise Control
 CS Cloth Seats
 LS Leather Seats
 DB 4 Whl Disc Brakes
 TL Telescopic Wheel
 AL Auto Load Level
 3S 3rd Seat (Wagons Only)
 8P 8 Passenger
 DA Dual Air Conditioning

- TRUCKS/VANS/UTV/OTHER**
 SB Step Bumper
 SW Sliding Rear Window
 XT Auxiliary Fuel Tank
 2T Two Tone Paint
 D2 Deluxe 2-Tone Paint
 MP Metallic Paint
 TG Tinted Glass
 CI Soft Top
 HT Hard Top
 FL Fog Lights
 BD Running Boards
 BL Bed Liners
 AR Chrome Bed Rails
 TP Trailing Package
 RB Roll Bar
 TB Tool Box (Permanent)
 GG Grill Guards
 PO P
 DW Dual Rear Wheels

- OTHER OPTIONS**
 WG Woodgrain
 BN Body Side Moldings
 BS Bucket Seats
 IW Intermittent Wipers
 PA Power Antenna
 PM Power Mirrors
 PT Power Trunk
 WP Rear Window Wiper
 RL Reclining Seats

- RADIO**
 AM AM
 FM FM
 ST Stereo
 CA Cassette
 SE Srch/Scan
 CD Single Disc
 CD Changer
 EQ Equalizer

- WHEEL OPTIONS**
 AW Aluminum
 AY Alloy
 LC Locking Wire
 SA Spoked Aluminum
 SY Styled Steel
 WW Wire
 WC Wire Covers

- ROOF OPTIONS**
 VR Vinyl Roof
 RF Cabriolet Roof
 ES Electric Steel
 EG Electric Glass
 MS Manual Steel
 MG Manual Glass
 FR Flip Roof
 TT T-Tops
 GT Glass T-Tops
 RR Roof Rack

Guide Book NADA

Month March

Base Book	21,425
Miles + -	-4,575
Blind Spot Monitor	+125
Rear Park Sensors	+125
Heated Mirrors	+50
Total Retail Book Value	17,150

APPRAISER C. Russell
 LOCATION Conway
 PHONE 501-977-4436

	Re-Place	Re-Pair	Old damage, mechanical repair, interior trim, refinishing, and any missing interior equipment (battery, radio, spare, etc.)					Tires Net Amount	Total Reconditioning Amount
	<input type="checkbox"/>	<input type="checkbox"/>	LF	RF	LR	RR	Spare		
Reconditioning	<input type="checkbox"/>	<input type="checkbox"/>							
	<input type="checkbox"/>	<input type="checkbox"/>							
	<input type="checkbox"/>	<input type="checkbox"/>							
	<input type="checkbox"/>	<input type="checkbox"/>							
	<input type="checkbox"/>	<input type="checkbox"/>							

DEALER QUOTES				STOCK		Quote
Dealership	Phone	Salesperson	Yes	No		
1. Cars on Demand	281-801-8957	Internet	<input checked="" type="checkbox"/>	<input type="checkbox"/>	16,995	
2. Russ Darrow Auto Group	720-789-8561	Internet	<input checked="" type="checkbox"/>	<input type="checkbox"/>	18,000	
3. USA Super Center	803-974-8194	Internet	<input checked="" type="checkbox"/>	<input type="checkbox"/>	17,974	
Average of Quotes					17,656	

SALVAGE BIDS			
Company	Person	Phone	Bid
1. Copart			3702.06
2. Pratt's Auto Salvage	Adam	870-886-7145	3481
3. Russell Towing	Donnie	501-354-8726	550
Salvage Location <u>Conway</u>	Charges day	Towing	

ACV CALCULATIONS	
1 Book Value	\$ 17,150
2 Avg of Quotes	\$ 17,656
3 Avg Lines 1 & 2	\$ 17,403
4 Reconditioning + -	\$
5 Suggested ACV	\$ 17,403
6 Sales Tax	\$
7 Grand Total	\$

Additional Comments _____

Eclipse Appraisal Inc.

PO BOX 84
 Solgohachia, AR 72156
 5019774436
 curtis@eclipseappraisal.com

Vehicle Information

Vehicle: 2018 Dodge Charger Sedan 4D Police
 5.7L V8
 Reference #: AAC-0041497
 Region: Southwestern
 Period: February 16, 2023
 VIN: 2C3CDXAT2JH257875
 Mileage: 128,216
 Base MSRP: \$34,250
 Typically Equipped MSRP: \$35,345



Unit #1812

J.D. POWER Used Cars/Trucks Values

	Base	Mileage Adj.	Option Adj.	Adjusted Value
Clean Retail	\$21,425	-\$4,575	\$300	\$17,150

Selected Options

	Trade-In/Loan	Retail
Blind Spot Monitor [VIN Precision+]	\$100	\$125
Rear Parking Sensors [VIN Precision+]	\$100	\$125
Heated Exterior Mirrors [VIN Precision+]	\$50	\$50

Drivers' Last Names REEDER

Juvenile Involved Yes No

ARKANSAS MOTOR VEHICLE CRASH REPORT

Severity Fatality Injury PDO

of Motor Vehicles 1

Rev. 2019-1

Crash Report # 202303399ASP

of Non-Motorists 0

Investigating Agency STATE POLICE TROOP A

Investigating Officer

CPL GLOVER THOMAS 330

Signature [Handwritten Signature]

CRASH DATE AND TIME

Table with 6 columns: Date of Crash, Time of Crash, Date Police Notified, Time Police Notified, Date Police Arrived, Time Police Arrived.

CRASH LOCATION

Table with 4 columns: County, City, Latitude, Longitude.

Table with 4 columns: Road/Street/Highway, Section, Log Mile, At Intersection With.

Not in City, but of the City Limits of

Not at Intersection, but of

CRASH FACTORS AND CONDITIONS

Main form area for crash factors and conditions, including sections for First Harmful Event, School Bus Related, Roadway Surface Condition, Weather Conditions, Roadway Conditions, Environmental Factors, and Trafficway Classification.

WORK ZONE CRASH INFORMATION

Table with 4 columns: Work Zone, Location Relative to Work Zone, Work Zone Type, Worker(s) Present, Law Enforcement Present.

Photos Taken <input type="checkbox"/> Yes <input checked="" type="checkbox"/> No	ATTACHMENTS	
	Type	Description
	Driver statement	Statement from Driver 1
	Witness statement	Statement from Witness 1

NON-VEHICULAR PROPERTY DAMAGE						
Description of Property Damage	Damage Estimate	Owner Contacted	Name	Address		
				Street	City	State Postal Code

WITNESSES' CONTACT INFORMATION						
Last Name	First Name	Middle Name	Suffix	Address	City	State Postal Code
WHEELER	JASMINE	DEE		12 CODY LN	CONWAY	AR 72032

ARKANSAS MOTOR VEHICLE CRASH REPORT
VEHICLE INFORMATION

Crash Report # 202303399ASP

Motor Vehicle #
1

DESCRIPTION AND IDENTIFICATION

<input type="checkbox"/> Check if this vehicle had no driver Hit and Run 000 No, did not leave the scene 001 No, vehicle & driver left the scene 002 No, only driver left the scene	<input type="checkbox"/> 100 Yes, vehicle & driver left the scene <input type="checkbox"/> 101 Yes, only driver left the scene	000	Vehicle Body Type Passenger Vehicles 100 2-door 101 4-door 102 Hatchback 103 Convertible 104 Station wagon 105 Pick-up 106 Minivan 107 Passenger van (seats any number if personal; up to 8 if business) 108 Cargo van (10,000 lbs or less) 109 Sport utility vehicle 110 Large utility vehicle 111 Motor home/recreational vehicle 198 Other passenger vehicle Truck (> 10,000 lbs) 200 Single unit truck (2 axles) 201 Single unit truck (3 or more axles) 202 Single unit truck with trailer 203 Truck tractor only (bobtail) 204 Tractor/semi-trailer 205 Tractor/doubles 206 Construction/maintenance equipment 207 Farm equipment 298 Other heavy vehicle (GVWR/GCWR > 10,000 lbs) Bus / Van / Limo (9 or more seats, including driver) 300 School bus 301 Transit/city bus 302 Motor coach/intercity/cross-country bus 303 Limousine 304 Van (seats 9-15, including driver) 390 Other vehicle (seats 9-15, including driver) 391 Other vehicle (seats 16 or more, including driver) Cycle / Low Speed 400 Motorcycle 401 Motor scooter 402 Moped 403 ATV (3, 4, or 6 wheels) 404 Snowmobile 405 Golf cart 406 Low speed vehicle 498 Other motorized cycle/low speed vehicle Unknown 999 Unknown type of motor vehicle <i>If 198, 298, 390, 391, or 498, describe below:</i>	101
VIN 2C3CDXAT2JH257875				
Vehicle Year, Make, and Model 2018 Dodge Charger <i>Year Make Model</i>				
License Plate AR 748XHA 2023 <i>State Number Year</i> <input type="checkbox"/> Missing <input type="checkbox"/> Unknown (fill in all known details)				
Trailer #1 License Plate <input type="checkbox"/> Missing <input type="checkbox"/> Unknown (fill in all known details)				
Trailer #2 License Plate <input type="checkbox"/> Missing <input type="checkbox"/> Unknown (fill in all known details)				
Owner Name <input type="checkbox"/> Same as driver <input type="checkbox"/> Unknown FAULKNER COUNTY SHERIFF'S OFFICE				
Owner Address <input type="checkbox"/> Same as driver <input type="checkbox"/> Unknown 801 LOCUST AVE CONWAY AR 72034-5330 <i>Street City State Postal Code</i>				
Motor Carrier Type 000 Personal transportation 100 Interstate carrier 101 Intrastate carrier 102 Not in commerce - government 103 Not in commerce - other truck 999 Unknown	000	Motor Carrier ID Numbers USDOT # _____ MC/MX # _____ State # _____ State _____		
Motor Carrier Name <input type="checkbox"/> Unknown				
Motor Carrier Address <input type="checkbox"/> Unknown <i>Street City State Postal Code</i>				
Cargo Body Type 000 No cargo body 100 Bus 101 Van / enclosed box 102 Grain / chips / gravel 103 Pole trailer 104 Cargo tank 105 Log 106 Intermodal container chassis 107 Vehicle towing another vehicle 108 Flatbed 109 Dump 110 Concrete mixer 111 Auto transporter 112 Garbage / refuse 198 Other 999 Unknown				
GVWR/GCWR 100 10,000 lbs or less 101 10,001 - 26,000 lbs 102 More than 26,000 lbs 970 Not applicable	970	Hazardous Materials Placard 000 000 Placard not required 100 Placard displayed 200 Placard required but not displayed 999 Unknown Hazardous Material ID <i>(4-digit # or name from middle of diamond or rectangular box)</i> Hazardous Material Class <i>(1-digit # from bottom of diamond)</i>		
Hazardous Materials Released from Vehicle Cargo Compartment 970 000 No, hazardous materials not released 100 Yes, hazardous materials released 970 Not applicable (not carrying hazardous materials)				

INSURANCE

DAMAGE

Insurance <input type="checkbox"/> Uninsured at time of crash <input type="checkbox"/> Unknown (fill in any known details)	Damage Severity 102 000 No damage 100 Minor damage 101 Functional damage 102 Disabling damage 999 Unknown Damage Estimate \$25,000	Initial Contact Point (check 1) <table border="1"> <tr><td>7</td><td>8</td><td>9</td><td>10</td><td>11</td></tr> <tr><td><input type="checkbox"/></td><td><input type="checkbox"/></td><td><input type="checkbox"/></td><td><input type="checkbox"/></td><td><input type="checkbox"/></td></tr> <tr><td>6</td><td><input checked="" type="checkbox"/></td><td><input checked="" type="checkbox"/></td><td><input checked="" type="checkbox"/></td><td><input checked="" type="checkbox"/></td></tr> <tr><td><input type="checkbox"/></td><td><input type="checkbox"/></td><td><input type="checkbox"/></td><td><input type="checkbox"/></td><td><input type="checkbox"/></td></tr> <tr><td>5</td><td>4</td><td>3</td><td>2</td><td>1</td></tr> </table>	7	8	9	10	11	<input type="checkbox"/>	<input type="checkbox"/>	<input type="checkbox"/>	<input type="checkbox"/>	<input type="checkbox"/>	6	<input checked="" type="checkbox"/>	<input checked="" type="checkbox"/>	<input checked="" type="checkbox"/>	<input checked="" type="checkbox"/>	<input type="checkbox"/>	<input type="checkbox"/>	<input type="checkbox"/>	<input type="checkbox"/>	<input type="checkbox"/>	5	4	3	2	1	Damaged Areas (check all that apply) <table border="1"> <tr><td>7</td><td>8</td><td>9</td><td>10</td><td>11</td></tr> <tr><td><input checked="" type="checkbox"/></td><td><input checked="" type="checkbox"/></td><td><input checked="" type="checkbox"/></td><td><input checked="" type="checkbox"/></td><td><input checked="" type="checkbox"/></td></tr> <tr><td>6</td><td><input checked="" type="checkbox"/></td><td><input checked="" type="checkbox"/></td><td><input checked="" type="checkbox"/></td><td><input checked="" type="checkbox"/></td></tr> <tr><td><input type="checkbox"/></td><td><input checked="" type="checkbox"/></td><td><input checked="" type="checkbox"/></td><td><input checked="" type="checkbox"/></td><td><input checked="" type="checkbox"/></td></tr> <tr><td>5</td><td>4</td><td>3</td><td>2</td><td>1</td></tr> </table>	7	8	9	10	11	<input checked="" type="checkbox"/>	<input checked="" type="checkbox"/>	<input checked="" type="checkbox"/>	<input checked="" type="checkbox"/>	<input checked="" type="checkbox"/>	6	<input checked="" type="checkbox"/>	<input checked="" type="checkbox"/>	<input checked="" type="checkbox"/>	<input checked="" type="checkbox"/>	<input type="checkbox"/>	<input checked="" type="checkbox"/>	<input checked="" type="checkbox"/>	<input checked="" type="checkbox"/>	<input checked="" type="checkbox"/>	5	4	3	2	1
7	8	9	10	11																																																	
<input type="checkbox"/>	<input type="checkbox"/>	<input type="checkbox"/>	<input type="checkbox"/>	<input type="checkbox"/>																																																	
6	<input checked="" type="checkbox"/>	<input checked="" type="checkbox"/>	<input checked="" type="checkbox"/>	<input checked="" type="checkbox"/>																																																	
<input type="checkbox"/>	<input type="checkbox"/>	<input type="checkbox"/>	<input type="checkbox"/>	<input type="checkbox"/>																																																	
5	4	3	2	1																																																	
7	8	9	10	11																																																	
<input checked="" type="checkbox"/>	<input checked="" type="checkbox"/>	<input checked="" type="checkbox"/>	<input checked="" type="checkbox"/>	<input checked="" type="checkbox"/>																																																	
6	<input checked="" type="checkbox"/>	<input checked="" type="checkbox"/>	<input checked="" type="checkbox"/>	<input checked="" type="checkbox"/>																																																	
<input type="checkbox"/>	<input checked="" type="checkbox"/>	<input checked="" type="checkbox"/>	<input checked="" type="checkbox"/>	<input checked="" type="checkbox"/>																																																	
5	4	3	2	1																																																	
Insurance Company ASSOC. OF ARKANSAS COUNTIES RISK MANAGEMENT FUND	Damage Prior to the Crash <input checked="" type="checkbox"/> No prior damage <input type="checkbox"/> Yes (describe below)	<input type="checkbox"/> 000 Non-collision <input type="checkbox"/> 100 Cargo loss <input type="checkbox"/> 113 Top <input type="checkbox"/> 114 Undercarriage <input type="checkbox"/> 999 Unknown	<input type="checkbox"/> 097 No damage <input checked="" type="checkbox"/> 113 Top <input checked="" type="checkbox"/> 114 Undercarriage <input type="checkbox"/> 999 Unknown																																																		
NAIC # 90046	Policy # RMF-1035																																																				

TOWING

Towed 101 000 Not towed 100 Towed, but not due to disabling damage 101 Towed due to disabling damage	Towed By PRO AUTO Towed To #6 RANCHETTE RD CONWAY AR 72032 <i>Street City State Postal Code</i>
--	--

ARKANSAS MOTOR VEHICLE CRASH REPORT
VEHICLE INFORMATION

Crash Report # 202303399ASP

MOTOR VEHICLE CIRCUMSTANCES

Vehicle Usage 108	Emergency Vehicle Usage 103	Vehicle Maneuver 101
000 No special function 100 Taxi 101 School bus/school transport 102 Church bus 103 Transit/commuter bus 104 Intercity bus 105 Charter/tour bus 106 Shuttle bus 107 Military 108 Police 109 Ambulance 110 Fire truck 111 Non-transport emergency services vehicle 112 Incident response 999 Unknown	100 Non-emergency, non-transport 101 Non-emergency transport 102 Emergency operation, emergency warning equipment not in use 103 Emergency operation, emergency warning equipment in use 970 Not applicable 999 Unknown	100 Movement essentially straight ahead 101 Negotiating a curve 102 Backing 103 Changing lanes 104 Overtaking/passing 105 Turning right 106 Turning left 107 Making U-turn 108 Leaving traffic lane 109 Entering traffic lane 110 Slowing 111 Parked 112 Stopped in traffic 198 Other
	Travel Direction 102	
	100 Northbound 101 Southbound 102 Eastbound 103 Westbound 104 Not on roadway 999 Unknown	

Vehicle Defects Check all that apply.

000 None

<input type="checkbox"/> 100 Brake	<input type="checkbox"/> 101 Exhaust system	<input type="checkbox"/> 102 Body or doors
<input type="checkbox"/> 103 Steering	<input type="checkbox"/> 104 Power train	<input type="checkbox"/> 105 Suspension
<input type="checkbox"/> 106 Tires	<input type="checkbox"/> 107 Wheels	<input type="checkbox"/> 108 Headlights
<input type="checkbox"/> 109 Tail lights	<input type="checkbox"/> 110 Turn signals	<input type="checkbox"/> 111 Windows or windshield
<input type="checkbox"/> 112 Mirrors	<input type="checkbox"/> 113 Wipers	<input type="checkbox"/> 114 Truck coupling, trailer hitch, or safety chains
<input type="checkbox"/> 115 Fuel system	<input type="checkbox"/> 116 Cruise control	

198 Other

999 Unknown

999 Unknown

Traffic Control Device Types and Statuses

Check the box next to each traffic control device that was present at the location of the crash. Use the codes to the right to record the status of each traffic control device present.

100 Functioning properly	101 Functioning improperly
102 Inoperative or missing	999 Unknown

Traffic Control Device Type	Device Status
Check all that apply.	
<input type="checkbox"/> 000 None	
<input type="checkbox"/> 100 Flashing traffic control signal	
<input type="checkbox"/> 101 Traffic control signal	
<input type="checkbox"/> 102 Stop sign	
<input type="checkbox"/> 103 Yield sign	
<input type="checkbox"/> 104 Slow or warning sign	
<input type="checkbox"/> 105 Person (officer, flagman, crossing guard)	
<input type="checkbox"/> 106 School zone sign/device	
<input type="checkbox"/> 107 Pedestrian signal	
<input type="checkbox"/> 108 No passing signal	
<input type="checkbox"/> 109 Words or symbols painted on roadway	
<input checked="" type="checkbox"/> 110 Traffic lanes marked	100
<input type="checkbox"/> 111 Railway crossing with gate and signals	
<input type="checkbox"/> 112 Railway crossing with flashing signals only	
<input type="checkbox"/> 113 Railway crossing with crossbuck only	
<input type="checkbox"/> 198 Other:	
<input type="checkbox"/> 999 Unknown	

Trafficway Description 200	Roadway Surface 101
100 One-way trafficway 200 Two-way, not divided 201 Two-way, not divided, with a continuous left turn lane 300 Two-way, divided, unprotected (painted >4 feet) median 400 Two-way, divided, positive cable barrier 401 Two-way, divided, positive concrete barrier 498 Two-way, divided, other type of positive barrier 999 Unknown	100 Concrete 101 Asphalt 102 Gravel 103 Dirt 198 Other 999 Unknown
Roadway Grade 103	Roadway Alignment 201
100 Level 101 Hillcrest 102 Uphill 103 Downhill 104 Sag (bottom) 999 Unknown	100 Straight 200 Curve left 201 Curve right 299 Curve, direction unknown 999 Unknown
Total # of Lanes 2	Posted Speed Limit 45
	Use the posted speed limit that applied to this vehicle at the time of the crash.

MOTOR VEHICLE EVENTS

Sequence of Events 1 [108] 2 [313] 3 [] 4 [] 5 [] 6 [] 7 [] 8 [] 9 [] 10 []

Most Harmful Event [313]

Non-Collision	Collision with Non-Fixed Object	Collision with Fixed Object	Unknown
100 Overturn/rollover 101 Fire/explosion 102 Immersion, full or partial 103 Jackknife 104 Cargo/equipment loss or shift 105 Equipment failure (blown tire, brake failure, etc.) 106 Separation of units 107 Ran off roadway right 108 Ran off roadway left 109 Deliberately crossed median 110 Unintentionally crossed median 111 Crossed centerline 112 Downhill runaway 113 Fell/jumped from motor vehicle 114 Reentering roadway 115 Object thrown or fallen on or near motor vehicle 198 Other non-collision	200 Pedestrian 201 Pedalcycle 202 Other non-motorist 203 Railway vehicle (train, engine) 204 Animal (live) 205 Motor vehicle in transport 206 Parked motor vehicle 207 Falling/shifting cargo or anything set in motion by motor vehicle 208 Work zone/maintenance equipment 298 Other non-fixed object	300 Impact attenuator/crash cushion 301 Bridge overhead structure 302 Bridge pier or support 303 Bridge rail 304 Cable barrier 305 Culvert 306 Curb 307 Ditch 308 Embankment 309 Guardrail face 310 Guardrail end 311 Concrete traffic barrier 312 Other traffic barrier 313 Tree (standing) 314 Utility pole/light support 315 Traffic sign support 316 Traffic signal support 317 Other post, pole, or support	318 Fence 319 Mailbox 320 Building 398 Other fixed object 999 Unknown

If 198, 298, or 398 is used, describe below:

ARKANSAS MOTOR VEHICLE CRASH REPORT
DRIVER INFORMATION

Crash Report # 202303399ASP

Motor Vehicle #
1

DRIVER INFORMATION

Name <input type="checkbox"/> Unknown		Date of Birth/Age	Sex <input checked="" type="checkbox"/> Male <input type="checkbox"/> Female <input type="checkbox"/> Unknown	Race
REEDER	AUSTIN	LANE	04/03/2001 Age: 21	100 100 White/Caucasian 101 Black/African-American 102 Hispanic 103 Asian/Pacific Islander 104 American Indian 198 Other 999 Unknown
Address <input type="checkbox"/> Unknown				
28 ALASKA DR	MOUNT VERNON	AR	721118002	
Street	City	State	Postal Code	

DRIVER LICENSE INFORMATION

License Status	100	License Number	939539748	Restrictions on License	Check all that apply.	Restrictions Violated	Check all that apply.
000 Not licensed 100 Valid license 200 Suspended 201 Revoked 202 Expired 203 Cancelled or denied 204 Disqualified 999 Unknown		License State	AR	License Class	D		
Is Commercial Driver License?		<input type="checkbox"/> Yes <input checked="" type="checkbox"/> No		<input type="checkbox"/> 000 None <input type="checkbox"/> 100 With licensed adult <input checked="" type="checkbox"/> 101 Corrective lenses <input type="checkbox"/> 102 Mechanical aid <input type="checkbox"/> 103 Prosthetic aid <input type="checkbox"/> 104 Automatic transmission <input type="checkbox"/> 105 Outside mirror <input type="checkbox"/> 106 Daylight only <input type="checkbox"/> 107 Class B or C with passengers and class D <input type="checkbox"/> 108 Class C only with passengers <input type="checkbox"/> 109 Vehicles without airbrakes <input type="checkbox"/> 110 Interlock device <input type="checkbox"/> 111 School, church, or transit bus <input type="checkbox"/> 112 Class D only with passengers <input type="checkbox"/> 113 Diesel fuel, fertilizer only <input type="checkbox"/> 114 Seasonal farm service vehicle <input type="checkbox"/> 198 Other (describe below)		<input checked="" type="checkbox"/> 000 None <input type="checkbox"/> 100 With licensed adult <input type="checkbox"/> 101 Corrective lenses <input type="checkbox"/> 102 Mechanical aid <input type="checkbox"/> 103 Prosthetic aid <input type="checkbox"/> 104 Automatic transmission <input type="checkbox"/> 105 Outside mirror <input type="checkbox"/> 106 Daylight only <input type="checkbox"/> 107 Class B or C with passengers and class D <input type="checkbox"/> 108 Class C only with passengers <input type="checkbox"/> 109 Vehicles without airbrakes <input type="checkbox"/> 110 Interlock device <input type="checkbox"/> 111 School, church, or transit bus <input type="checkbox"/> 112 Class D only with passengers <input type="checkbox"/> 113 Diesel fuel, fertilizer only <input type="checkbox"/> 114 Seasonal farm service vehicle <input type="checkbox"/> 198 Other (describe below)	
Endorsements on License		Endorsements Violated					
Check all that apply.		Check all that apply.					
<input checked="" type="checkbox"/> 000 None		<input checked="" type="checkbox"/> 000 None					
<input type="checkbox"/> 100 Double/triple trailers		<input type="checkbox"/> 100 Double/triple trailers					
<input type="checkbox"/> 101 Passenger		<input type="checkbox"/> 101 Passenger					
<input type="checkbox"/> 102 Tank vehicle		<input type="checkbox"/> 102 Tank vehicle					
<input type="checkbox"/> 103 Hazardous materials		<input type="checkbox"/> 103 Hazardous materials					
<input type="checkbox"/> 104 Tank vehicle & hazardous materials		<input type="checkbox"/> 104 Tank vehicle & hazardous materials					
<input type="checkbox"/> 105 School		<input type="checkbox"/> 105 School					
<input type="checkbox"/> 106 Motorcycle		<input type="checkbox"/> 106 Motorcycle					
<input type="checkbox"/> 107 Motor driven cycle		<input type="checkbox"/> 107 Motor driven cycle					
<input type="checkbox"/> 108 Valid without photo		<input type="checkbox"/> 108 Valid without photo					
<input type="checkbox"/> 198 Other (describe below)		<input type="checkbox"/> 198 Other (describe below)					

DRIVER SEATING AND SAFETY INFORMATION

Seating Position	110	Restraint Systems Used	100	Motorcycle Helmet Usage	000																																																					
Standard Vehicle Seats	Other Seating Positions	000 None used - motor vehicle occupant 100 Shoulder and lap belt used 101 Shoulder belt only used 102 Lap belt only used 103 Restraint used - type unknown 104 Child restraint system - forward facing 105 Child restraint system - rear facing 106 Booster seat 107 Child restraint - type unknown 198 Other 970 Not applicable 999 Unknown		000 No helmet worn 100 DOT-compliant motorcycle helmet worn 101 Non-DOT-compliant motorcycle helmet worn 102 Helmet worn, unknown if DOT-compliant 999 Unknown if helmet worn Eye Protection Usage <input type="checkbox"/> Yes <input checked="" type="checkbox"/> No <input type="checkbox"/> Unknown																																																						
<table border="1"> <thead> <tr> <th colspan="5">Front</th> </tr> <tr> <th>Row</th> <th>Left</th> <th>Middle</th> <th>Right</th> <th>Other</th> </tr> </thead> <tbody> <tr> <td>1</td> <td>110</td> <td>120</td> <td>130</td> <td>180</td> </tr> <tr> <td>2</td> <td>210</td> <td>220</td> <td>230</td> <td>280</td> </tr> <tr> <td>3</td> <td>310</td> <td>320</td> <td>330</td> <td>380</td> </tr> <tr> <td>4</td> <td>410</td> <td>420</td> <td>430</td> <td>480</td> </tr> <tr> <td>5</td> <td>510</td> <td>520</td> <td>530</td> <td>580</td> </tr> </tbody> </table>	Front					Row	Left	Middle	Right	Other	1	110	120	130	180	2	210	220	230	280	3	310	320	330	380	4	410	420	430	480	5	510	520	530	580	800 Sleeper section of cab (truck) 801 Passenger section of bus 802 Enclosed passenger/cargo area 803 Unenclosed passenger/cargo area 804 Passenger/cargo area, unknown if enclosed 805 Trailing unit 806 Riding on motor vehicle exterior Unknown 999 Unknown	Air Bags Deployed Check all that apply: <input type="checkbox"/> 000 Not deployed <input checked="" type="checkbox"/> 100 Deployed: front <input type="checkbox"/> 101 Deployed: side <input type="checkbox"/> 102 Deployed: curtain <input type="checkbox"/> 198 Deployed: other <input type="checkbox"/> 970 Not applicable <input type="checkbox"/> 999 Unknown		Ejection 000 Not ejected 100 Ejected, partially 101 Ejected, totally 970 Not applicable 999 Unknown	Extrication 000 Not extricated 100 Extricated 999 Unknown																		
Front																																																										
Row	Left	Middle	Right	Other																																																						
1	110	120	130	180																																																						
2	210	220	230	280																																																						
3	310	320	330	380																																																						
4	410	420	430	480																																																						
5	510	520	530	580																																																						
Bus Seating Position	(Complete if 801 was selected for Seating Position above.) <table border="1"> <thead> <tr> <th colspan="6">Front</th> </tr> <tr> <th colspan="3">Driver</th> <th colspan="3">Aisle</th> </tr> <tr> <th>1A</th> <th>1B</th> <th>1C</th> <th>1D</th> <th>1E</th> <th>1F</th> </tr> </thead> <tbody> <tr> <td>2A</td> <td>2B</td> <td>2C</td> <td>2D</td> <td>2E</td> <td>2F</td> </tr> <tr> <td>3A</td> <td>3B</td> <td>3C</td> <td>3D</td> <td>3E</td> <td>3F</td> </tr> <tr> <td>4A</td> <td>4B</td> <td>4C</td> <td>4D</td> <td>4E</td> <td>4F</td> </tr> <tr> <td>5A</td> <td>5B</td> <td>5C</td> <td>5D</td> <td>5E</td> <td>5F</td> </tr> <tr> <td>⋮</td> <td>⋮</td> <td>⋮</td> <td>⋮</td> <td>⋮</td> <td>⋮</td> </tr> <tr> <td>##A</td> <td>##B</td> <td>##C</td> <td>##D</td> <td>##E</td> <td>##F</td> </tr> </tbody> </table>		Front						Driver			Aisle			1A	1B	1C	1D	1E	1F	2A	2B	2C	2D	2E	2F	3A	3B	3C	3D	3E	3F	4A	4B	4C	4D	4E	4F	5A	5B	5C	5D	5E	5F	⋮	⋮	⋮	⋮	⋮	⋮	##A	##B	##C	##D	##E	##F	Ejection Path 000 Not ejected 100 Side door opening 101 Side window 102 Windshield 103 Back window 104 Back door/tailgate opening 105 Roof opening (sun roof, convertible top down) 106 Roof (convertible top up) 198 Other (e.g., back of pickup truck, torn-off roof, car cut in half) 970 Not applicable 999 Unknown	
Front																																																										
Driver			Aisle																																																							
1A	1B	1C	1D	1E	1F																																																					
2A	2B	2C	2D	2E	2F																																																					
3A	3B	3C	3D	3E	3F																																																					
4A	4B	4C	4D	4E	4F																																																					
5A	5B	5C	5D	5E	5F																																																					
⋮	⋮	⋮	⋮	⋮	⋮																																																					
##A	##B	##C	##D	##E	##F																																																					

Motor Vehicle #

1

ARKANSAS MOTOR VEHICLE CRASH REPORT
DRIVER INFORMATION

Page 6 of 8

Crash Report # 202303399ASP

MEDICAL INFORMATION

Injury Status 1 (K) Fatal Injury 2 (A) Suspected serious injury 3 (B) Suspected minor injury 4 (C) Possible Injury 5 (O) No apparent injury	Type of Medical Transportation 000 Not transported 100 EMS air 101 EMS ground 102 Law enforcement 198 Other	EMS Notified 02/16/2023 06:17 PM Date Time	EMS Arrived 02/16/2023 06:30 PM Date Time
Trauma Band # C117770	199 Transported, but method unknown 999 Unknown if transported	Transported to Medical Facility By PAFFORD - FAULKNER COUNTY, Medical Facility Transported To BAPTIST HEALTH MEDICAL CENTER-CONWAY, CONWAY, AR	

DRIVER CONDITION AND CIRCUMSTANCES

Condition at Time of Crash <i>Check all that apply:</i> <input checked="" type="checkbox"/> 000 Apparently normal <input type="checkbox"/> 100 Physically impaired <input type="checkbox"/> 101 Emotional (depressed, angry, disturbed, etc.) <input type="checkbox"/> 102 Ill (sick) or fainted <input type="checkbox"/> 103 Asleep or fatigued <input type="checkbox"/> 104 Under the influence of medication or drugs <input type="checkbox"/> 105 Under the influence of alcohol <input type="checkbox"/> 198 Other <input type="checkbox"/> 999 Unknown	Driver Distracted By 000 Not distracted 100 Manually operating an electronic communication device (texting, typing, dialing) 101 Talking on hands-free electronic device 102 Talking on hand-held electronic device 103 Other activity with an electronic device 104 Passenger 980 Other distraction inside the vehicle 981 Other distraction outside the vehicle 999 Unknown if distracted <i>If 980 or 981, describe below:</i>	Driver Vision Obscured By 000 No obstruction noted 100 Rain, snow, fog, smoke, sand, or dust 101 Reflected glare, bright sunlight, or headlights 102 Curve, hill, or other roadway design feature 103 Building, billboard, or other structure 104 Trees, crops, or vegetation 105 In-transport motor vehicle (including load) 980 Other visual obstruction (describe below)	Other 106 Not in-transport motor vehicle (parked, working) 107 Splash or spray of passing vehicle 108 Inadequate defrost or defog system 109 Inadequate vehicle lighting system 110 Obstruction interior to the vehicle 111 External mirrors 112 Broken or improperly cleaned windshield 113 Obstructing angles on vehicle 199 Vision obscured - no details
---	--	--	---

Driver Suspected of Alcohol Usage <input type="checkbox"/> Yes <input checked="" type="checkbox"/> No <input type="checkbox"/> Unknown	Alcohol Test Type Given 000 No test given 001 Test refused 100 Blood test 101 Breath test 102 Urine test 198 Other type of test 999 Unknown if tested	Alcohol Test Result Status 100 Results pending 101 Results received 970 Not applicable 999 Unknown	Blood Alcohol Content <input type="checkbox"/> Result received from Crime Lab	Speeding Related 000 Not speeding 100 Racing 101 Exceeded speed limit 102 Too fast for conditions 999 Unknown
--	---	---	---	---

Driver Suspected of Drug Usage <input type="checkbox"/> Yes <input checked="" type="checkbox"/> No <input type="checkbox"/> Unknown	Drug Test Type Given 000 No test given 001 Test refused 100 Blood test 101 Urine test 102 Both blood and urine tests 198 Other type of test 999 Unknown if tested	Drug Test Results <input type="checkbox"/> Pending/Negative <input type="checkbox"/> 000 Results negative <input type="checkbox"/> 100 Results pending <input type="checkbox"/> Positive Results (check all that apply) <input type="checkbox"/> 200 Amphetamines <input type="checkbox"/> 201 Barbiturates <input type="checkbox"/> 202 Benzodiazepines <input type="checkbox"/> 203 Cannabinoids <input type="checkbox"/> 204 Cocaine <input type="checkbox"/> 205 Methadone <input type="checkbox"/> 298 Other positive result (describe below)	<input type="checkbox"/> Result received from Crime Lab <input checked="" type="checkbox"/> Not Applicable/Unknown <input type="checkbox"/> 970 Not applicable <input type="checkbox"/> 999 Unknown	Citations Citation # Charges
---	---	--	--	--

DRIVER ACTIONS AT TIME OF CRASH

Check all that apply:

<input type="checkbox"/> 000 No contributing action	<input type="checkbox"/> 999 Unknown
Disregarded Traffic Signs or Controls <input type="checkbox"/> 100 Disregarded red light <input type="checkbox"/> 101 Disregarded other traffic signal <input type="checkbox"/> 102 Disregarded stop sign <input type="checkbox"/> 103 Disregarded yield sign <input type="checkbox"/> 104 Disregarded other traffic sign <input type="checkbox"/> 105 Disregarded other road markings <input type="checkbox"/> 106 Disregarded officer or flagman	Improper Maneuver <input type="checkbox"/> 300 Improper right turn <input type="checkbox"/> 301 Improper left turn <input type="checkbox"/> 302 Improper U-turn <input type="checkbox"/> 303 Improper backing <input type="checkbox"/> 304 Improper passing <input type="checkbox"/> 305 Improper lane change <input type="checkbox"/> 306 Improperly parked
Swerved or Avoided <input type="checkbox"/> 200 Swerved or avoided due to wind <input type="checkbox"/> 201 Swerved or avoided due to slippery surface <input type="checkbox"/> 202 Swerved or avoided due to motor vehicle <input type="checkbox"/> 203 Swerved or avoided due to non-motorist in roadway <input type="checkbox"/> 204 Swerved or avoided due to object in roadway <input type="checkbox"/> 205 Swerved or avoided due to animal in roadway	Improper Use of Lights or Signals <input type="checkbox"/> 400 Driving without lights <input type="checkbox"/> 401 Failed to dim headlights <input type="checkbox"/> 402 Failed to or improper signal Unsafe Operation <input type="checkbox"/> 500 Reckless operation <input type="checkbox"/> 501 Aggressive operation <input type="checkbox"/> 502 Inattentive, careless, negligent, or erratic operation <input type="checkbox"/> 503 Under the influence of alcohol <input type="checkbox"/> 504 Under the influence of drugs
	Other Actions <input type="checkbox"/> 600 Impeding traffic <input checked="" type="checkbox"/> 601 Ran off roadway <input type="checkbox"/> 602 Crowded off roadway <input type="checkbox"/> 603 Crossing median <input type="checkbox"/> 604 Failed to yield right-of-way <input type="checkbox"/> 605 Failed to keep in proper lane <input type="checkbox"/> 606 Wrong side of road <input type="checkbox"/> 607 Wrong way <input type="checkbox"/> 608 Followed too closely <input type="checkbox"/> 609 Cutting in <input type="checkbox"/> 610 Over-correcting or over-steering <input type="checkbox"/> 980 Other contributing action (describe below)

ARKANSAS MOTOR VEHICLE CRASH REPORT
NARRATIVE

509831

Page 7 of 8

Crash Report # 202303399ASP

V1 WAS EASTBOUND ON OTTO RD. ATTEMPTING TO CATCH A FLEEING VEHICLE.

THE ROAD CURVED RIGHT AND V1 BEGAN TO VEER TO THE NORTH. V1 VEERED OFF THE NORTH SIDE OF THE ROADWAY AND DOWN AN EMBANKMENT. V1 WENT THROUGH THE DITCH ON THE NORTH SIDE OF THE ROADWAY AND UP AN EMBANKMENT BEFORE VEERING EAST. V1 VEERED EAST INTO TREES ON THE NORTH SIDE OF THE ROADWAY. THE FRONT OF V1 STRUCK SEVERAL TREES ON THE NORTH SIDE OF THE ROADWAY.

V1 CAME TO REST IN THE TREES ON THE NORTH SIDE OF THE ROADWAY, FACING EAST.

Scene #
1

ARKANSAS MOTOR VEHICLE CRASH REPORT DIAGRAM

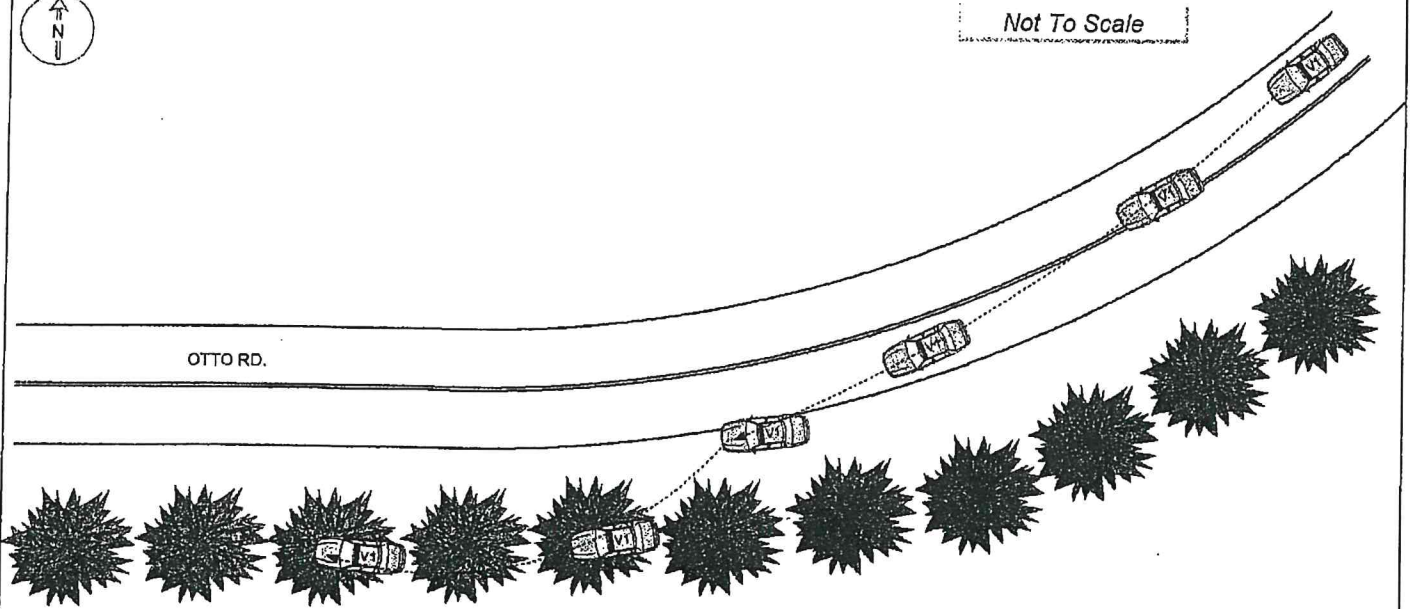
Page 8 of 8

Crash Report # 202303399ASP



Not To Scale

OTTO RD.





ARKANSAS STATE POLICE

ASP-81
(Rev. 06/01)

Accident Supplement Driver/Witness Statement Form

Report #: _____

Name: Austin L. Reeder F3D Date: 2.16.23 Time: 8:00 AM PM
(First/MI/Last Name) (Month/Day/Year)

Address: 28 Alaska Dr. MA Vernon AR 72111
City State Zip Code

Phone Number: 501 849 4441 Date of Birth: 4.3.01
Area Code Telephone (Month/Day/Year)

Drivers License #: 939539748 DL CDL State: AR

Vehicle Make: _____ Model: _____ Vehicle License #: _____ State: _____

Location of Accident: _____

Statement of: Driver Passenger Witness **Are You Injured?** Yes No
(Check One) (Check One)

Driver/Passenger/Witness Statement

On 2.16.23 at approximately 6:00pm I observed a red Ford truck running a stop sign @ Oth Rd + Oak Rowery, I then pulled out behind them and activated emergency lights + sirens which he then began to pee from me. I then notified dispatch that I was in pursuit of vehicle + gave my location. I then was coming up to a curve in which I hit the breaks to slow for the curve. The breaks gave way and I exited the roadway and hit a tree. I then called dispatch on my phone notifying I was in a wreck + gave my location. Shortly after officers arrive on scene

As the **driver** of the vehicle, were any of the following conditions a contributing factor in this accident?

- Unconsciousness Epileptic Condition
- Other nervous disorder or marked mental confusion
- Result of any physical disability, disease, disorder or any other medical condition

Thomas H. Glover
Signature (First/MI/Last Name)

CPL. THOMAS H. GLOVER #330



ARKANSAS STATE POLICE

ASP-81
(Rev. 06/01)

Accident Supplement Driver/Witness Statement Form

Report #: _____

Name: Jasmine Wheeler Date: 2/16/23 Time: 2000 AM PM
(First/MI/Last Name) (Month/Day/Year)

Address: 10 Cody lane Conway AR 72032
City State Zip Code

Phone Number: (864) 634 6852 Date of Birth: 12/28/81
Area Code Telephone (Month/Day/Year)

Drivers License #: 904 981383 DL CDL State: AR

Vehicle Make: Subaru Model: Ascent Vehicle License #: _____ State: AR

Location of Accident: Otto Rd

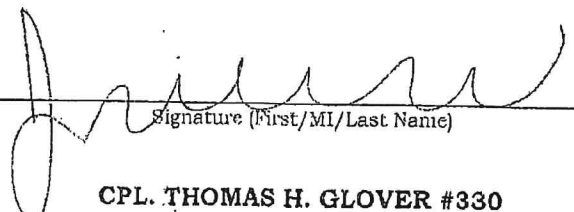
Statement of: Driver Passenger Witness
(Check One) Are You Injured? Yes No
(Check One)

Driver/Passenger/Witness Statement

I was driving down Otto Rd, when I slowed down because there was a camper and utility type truck in the roadway. I slowed down and as I did, a red ^{writing on} Full size truck came around and into my lane almost head on. I continued down Otto Rd. That is when I came upon a Faulkner County Sheriff in the tree line with Blue lights still on. A female in an SUV was pulled off on my side and a male was getting out of truck on other side of road going to accident with flashlight.

As the **driver** of the vehicle, were any of the following conditions a contributing factor in this accident?

- Unconsciousness Epileptic Condition
- Other nervous disorder or marked mental confusion
- Result of any physical disability, disease, disorder or any other medical condition


Signature (First/MI/Last Name)
CPL. THOMAS H. GLOVER #330

