



U.S. Small Business Administration



DISASTER ASSISTANCE NOW AVAILABLE

SBA Offers Disaster Assistance to Arkansas
Businesses and Residents Affected by the Severe
Storms, Straight-line Winds and Tornadoes

occurring: June 25 through June 26, 2023

Counties

Primary: Lonoke & Poinsett (Eligible for Physical Damage & EIDL)
Contiguous: Arkansas, Craighead, Crittenden, Cross, Faulkner,
Jackson, Jefferson, Mississippi, Prairie, Pulaski & White (EIDL only)

Key Facts

Businesses of all sizes and private nonprofit organizations may borrow up to \$2 million to repair or replace physical damages

Disaster loans up to \$500,000 are available to homeowners to repair or replace damaged or destroyed real estate. Homeowners and renters are eligible for up to \$100,000 to repair or replace personal property, including up to 1 vehicle

Economic Injury Disaster Loans (EIDL) available for Small Businesses, Small Agricultural Cooperatives, and most Private Non-Profits

Rates as low as 2.5% for homeowners & renters, 2.375% for private Non-Profits and 4% for Businesses

Loan terms up to 30 years, no payments or interest accrual for 12 months from the date of the initial disaster loan disbursement

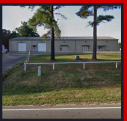
Application Filing Deadlines

Physical Damage: January 16, 2024

Economic Injury: August 19, 2024

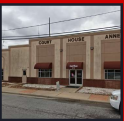
Disaster Loan Outreach Centers

Opening Monday, November 27th



FAULKNER COUNTY
Emergency
Management Office
Training Room
57 Acklin Gap Road
Conway, AR 72032

Mondays – Tuesdays
8am–4:30pm CT
Wednesdays
9:30am–6pm CT
Fridays: 8am–4:30pm CT
Beginning December 14,
Thursdays 8am–4:30pm CT



LONOKE COUNTY
Lonoke County
Courthouse Annex
Break Room
210 N Center Street
Lonoke, AR 72086

Mondays – Friday
8am–4:30pm CT



POINSETT COUNTY
Marked Tree
Community Center
806 Liberty Street
Marked Tree,
AR 72365

Mondays – Fridays
8am–5:00pm CT

Virtual Disaster Loan Outreach Center

Monday – Friday (5 days/week)
8:00 a.m. – 4:30 p.m. PT
FOCWAAssistance@sba.gov
(916) 735-1507

Applicants may apply online, receive additional disaster assistance information, and download applications at <https://disasterloanassistance.sba.gov/>