

FAULKNER COUNTY

**Allen Dodson**  
COUNTY JUDGE

801 LOCUST STREET • CONWAY, AR 72034

FILED

TIME: 9:17am

MAR 14 2025

MARGARET DARTER  
FAULKNER COUNTY CLERK  
BY Matters DC

IN THE COUNTY COURT OF FAULKNER COUNTY, ARKANSAS

COURT ORDER 25-046

**IN THE MATTER OF  
ACCEPTING A BID FOR  
A POULTRY LITTER  
SPREADER**


Having opened and reviewed the submitted bids for a new poultry litter spreader on February 27, 2025. The Court finds that the following bid is accepted in that it is the lowest bid and meets all bid requirements.

<u>Company</u>	<u>Total Bid (including taxes)</u>
Adams Fertilizer Equipment	\$ 36,213.75

The Court finds that the following bids either failed to comply with the bid specifications or were not the lowest bid:

Chandler Equipment	\$ 36,510.64
Millcreek Manufacturing	\$ 43,281.58

**IT IS SO ORDERED.**

  
 \_\_\_\_\_  
 Allen Dodson  
 Faulkner County Judge  
 Date: 3-13-25

Bid Sheet

Name of Dealer Adams Fertilizer Equipment

Name of Individual Representing Dealer Steve Bradley 870-344-2021

The above-named dealer offers to sell one New Poultry Litter Spreader with the following specifications:

- New Poultry Litter Spreader
- Minimum Capacity 260 cu. Ft.
- Overall Width: 84 inches minimum
- Overall Height: 60 inches minimum
- Overall Length: 20 feet minimum
- Powder coated paint for corrosion resistance
- Tandem Axles
- P.T.O. Driven Hydraulic Pump

FILED  
 TIME: 10:31 am  
 FEB 27 2025  
 MARGARET DARTER  
 FAULKNER COUNTY CLERK  
 BY: Walters DC

to Faulkner County, at a base price of \$ 33,300.

This brings the total price including taxes to be paid by Faulkner County for a new poultry litter spreader matching the above specifications to be \$ 36,213.75.

Signature: Steve C Bradley Date: 2/12/25



**ADAMS FERTILIZER EQUIPMENT**

MFD. BY INDUSTRIAL IRON WORKS, INC  
 1503 SOUTH WHITEHEAD DR  
 PO BOX 628  
 DEWITT, AR 72042  
 Phone: 870-946-2494  
 Website: www.adamsfertequip.com

**QUOTATION**

Estimate

Order #	Date
73684	02/24/2025

<b>Bill To:</b>
Faulkner County Judge's Office Attn: POULTRY LITTER SPREADER 801 Locust Street Conway, AR 72034

<b>Ship To:</b>
Faulkner County Judge's Office Attn: POULTRY LITTER SPREADER 801 Locust Street Conway, AR 72034

Contact: Ladonna Taylor 501-505-4060

SALESMAN	TERMS	VIA	PO#
Steve Bradley 870.344.2021	NET 30	NET DELIVERED	

Item #	Number	Description	Unit Price	Qty Ordered	Total Price
1	CLS-HYD-PULL-20	ADAMS 20FT PULL TYPE LITTER SPREADER, 6:1 TWIN PINION GEAR REDUCTION DRIVE BOX, 32IN WIDE PINTLE CHAIN WITH 3/8IN X 1 1/4IN HR FLAT BARS ON 4" CENTERS, 30IN FAN ASSEMBLIES, TANDEM RUBBER TORSION AXLES, POWDER-COATED	\$33,300.00	1 ea	\$ 33,300.00

\*AR SALES TAX INCLUDED

<b>Subtotal:</b>	<b>\$33,300.00</b>
<b>Sales Tax:</b>	<b>\$2,913.75</b>
<b>Total:</b>	<b>\$36,213.75</b>

- \*A RESTOCKING FEE APPLIED ON ACCEPTED RETURNED PARTS, 15% UP TO 6 MONTHS.
- \*CUSTOMER RESPONSIBLE FOR ANY APPLICABLE SALES TAX.
- \*NON-CASH-ADJUSTMENT REFLECTS A (3.50%) CREDIT CARD PROCESSING FEE.
- \*INTEREST RATE OF 18% CHARGED ON ALL ACCOUNTS PAST 30 DAYS.
- \*CREDIT MEMOS EXPIRE A YEAR FROM THE DATE OF ISSUE.

# ADAMS CLS-00

## ADAMS EQUIPMENT

With over 40 years of experience and 12 plus product lines, Adams is the only call you need to make for all your fertilizer handling, blending or spreading equipment needs.

PULL TYPE LITTER SPREADER



TRUCK MOUNT LITTER SPREADER



**adams**  
FERTILIZER EQUIPMENT

Manufactured by INDUSTRIAL IRON WORKS, P.O. Box 628 Highway 1, DeWitt, Arkansas 72042

# ADAMS CLS-00



POULTRY/LIME BELT CONVEYOR



HYDRAULIC CHAIN LITTER CONVEYOR



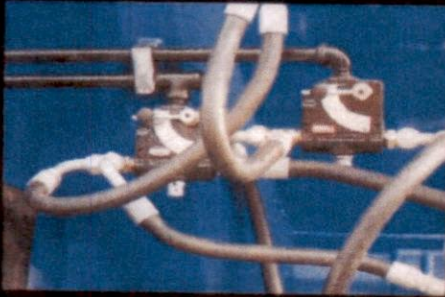
**adams**  
FERTILIZER EQUIPMENT

Manufactured by INDUSTRIAL IRON WORKS, P.O. Box 628 Highway 1, DeWitt, Arkansas 72042

# ADAMS CLS-00

## SPECIAL & OPTIONAL FEATURES

Dual Flow Control Valves



New 30" Fans w/Skid Plate



42" Wide Door Opening



Heavy Duty Twin Pinion Gear Box



Direct Mount Self Contained Hyd System



3 Optional Colors: Green, Red or White (not shown)



Call our TOLL FREE number 1.800.643.4266 for more information, options and prices.  
Visit our website: [www.adamsfertequip.com](http://www.adamsfertequip.com) • Email: [adams@adamsfertequip.com](mailto:adams@adamsfertequip.com) • Fax: 870.946.4396

# ADAMS CLS-00

## SPECS

### 1 PULL TYPE & TRUCK MOUNT LITTER SPREADER

### 2 POULTRY/LIME BELT CONVEYOR

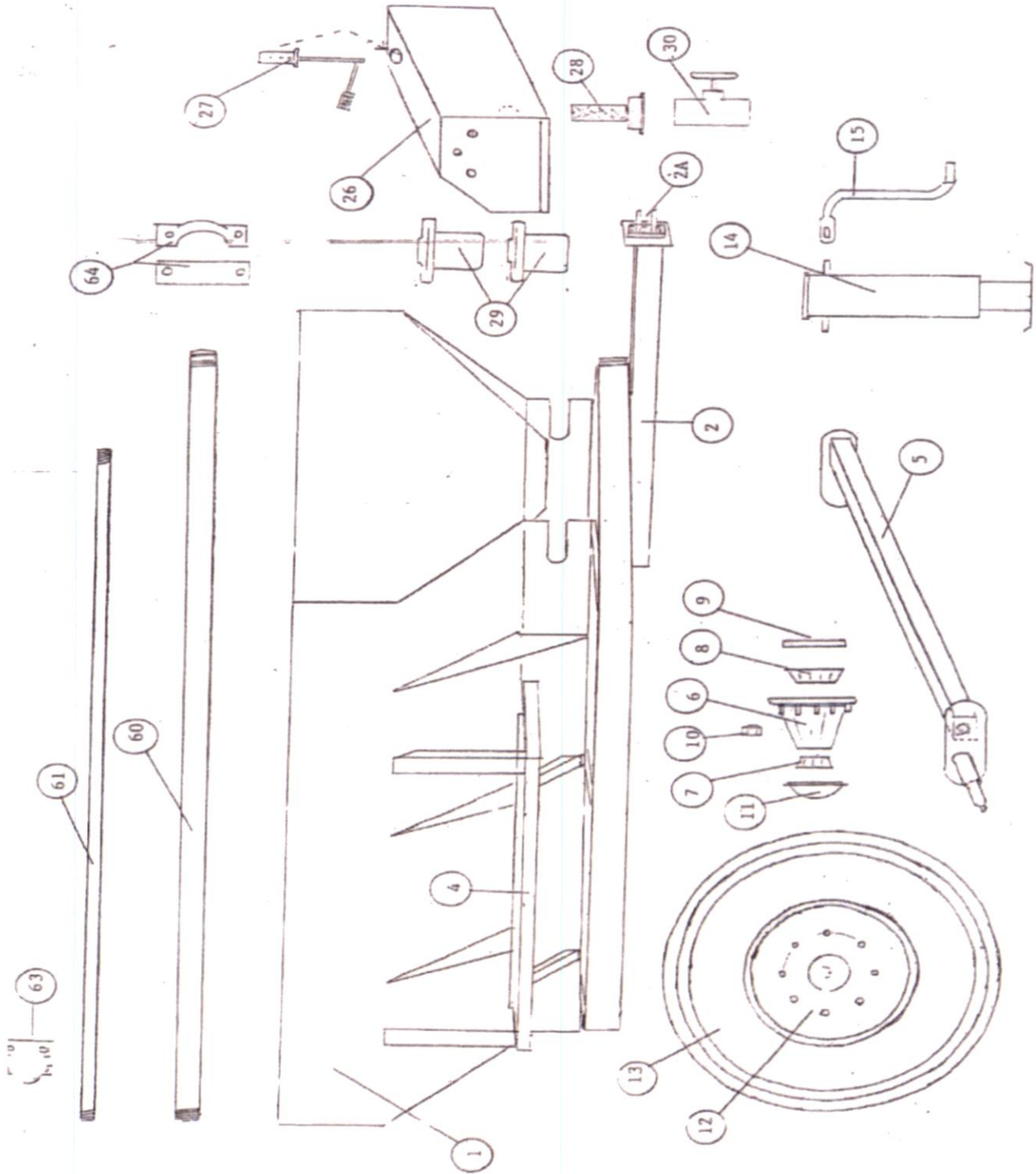
### 3 HYDRAULIC CHAIN LITTER CONVEYOR

1	STANDARD	TRUCK MOUNT	OPTIONAL
hopper length	10 to 24 ft	10 to 24 ft	
hopper width	88 in	88 in	
hopper height	84 in	52 in	to/pro or extended height
overall width	96 in	96 in	
overall length	hopper plus 7 ft	hopper plus 3 ft	extended tongue
overall height	84 in	52 in plus truck frame	
trough floor	3/16" h/r plate	3/16" h/r plate	3/8" UHMW lined
hopper material	10 ga m/s	10 ga m/s	
frame material	7 in channel	N/A	
drive	hydraulic	hydraulic	PTO mechanical/tractor supply hyd
axle/tires	10-12 ft 14-18FT 20-24FT	7 k rubber torsion 10 k rubber torsion 10 k rubber torsion	12.5L-15 8 PLY 16.5L-16.1 10PLY 19L-16.1 10 PLY
spread width		30 to 45 ft	
capacity	20 cu/ft per liner ft	20 cu/ft per liner ft	
paint	powder coated-blue	powder coated-blue	red -white-green
chains	D-667X 12K pentle	D-667X 12K pentle	D-667 KC 26K pentle
empty weight			
optional equipment	side to side vinyl, e vinyl, front to back mesh/man, front to back /electric, 12volt hyd shut off's, lime baffle w/double bar chain, hydraulic door(spreader), hydraulic door(truck)		

2	STANDARD	OPTIONAL
length	8'6" flat x 30 ft incline	
bell width	24 inches	30 inches
overall width	96 inches	
intake hopper	36" x 96"	
power source	27hp kohler	25 hp kohler diesel
drive system	hydraulic	tractor supply
tongue jack	hydraulic assist	
trough roller	4 in metal heavy duty	
bell dem	24" 3 ply 220a pvc	
frame	6 in channel iron	
axle	rigid w/8K hubs	
tires	12.5L-15 farm hwy 8ply	
paint	blue powder coat	green/red
transport	tow hitch,safety chains,tail lights	
dump height	12 ft 6 in	
in load	30 inches w/fold down side panels	
weight	4440 lbs	
unload rate	2 to 4 tons per minute based on product	
control valve	single lever w/flow control valve	
fuel tank	10 gal mild steel	15 gal stainless steel
hydraulic tank	25 gal mild steel	25 gal stainless steel
bearings	sealed industrial duty	

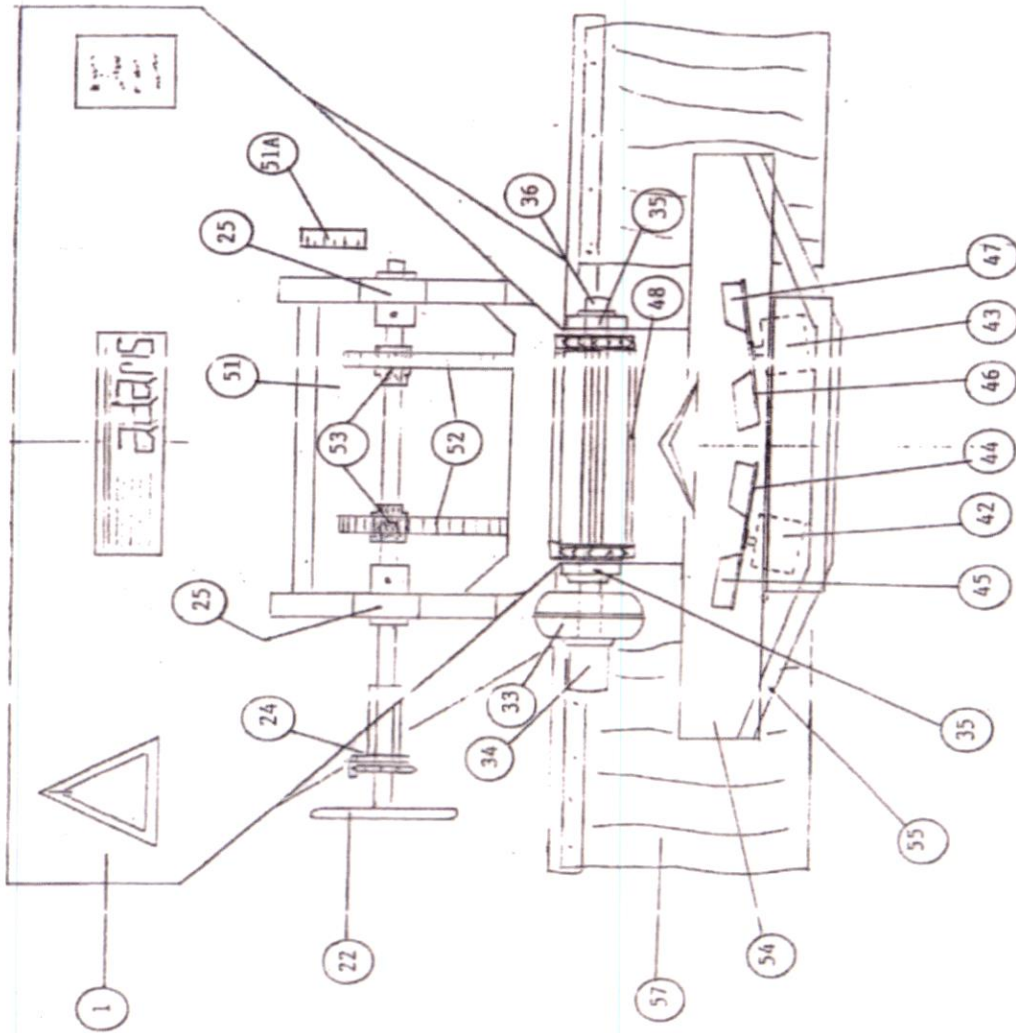
3	STANDARD	OPTIONS
length	32 ft	up to 60 ft
width	8 ft	
height	14ft 8 in	
material	10ga mild steel	304 s/s
paint	powder coat blue	green/red
power source	27 hp kohler	25 hp kohler diesel
drive system	hydraulic with variable speed	tractor supply hydraulics
intake hopper	96" wide	10 ft wide
chain	D-667X w/2" x 1 1/4" angle bars on 9" spacing	
controls	single spool with flow control valve	
axle	rigid w/ 8K 8-bolt hubs	
tires	11-22.5 14 ply	
tongue jack	dual 12k 4"x4"	
unload rate	1 to 2 ton per minute	
empty weight	4760 lbs	

# ADAMS CLS-00

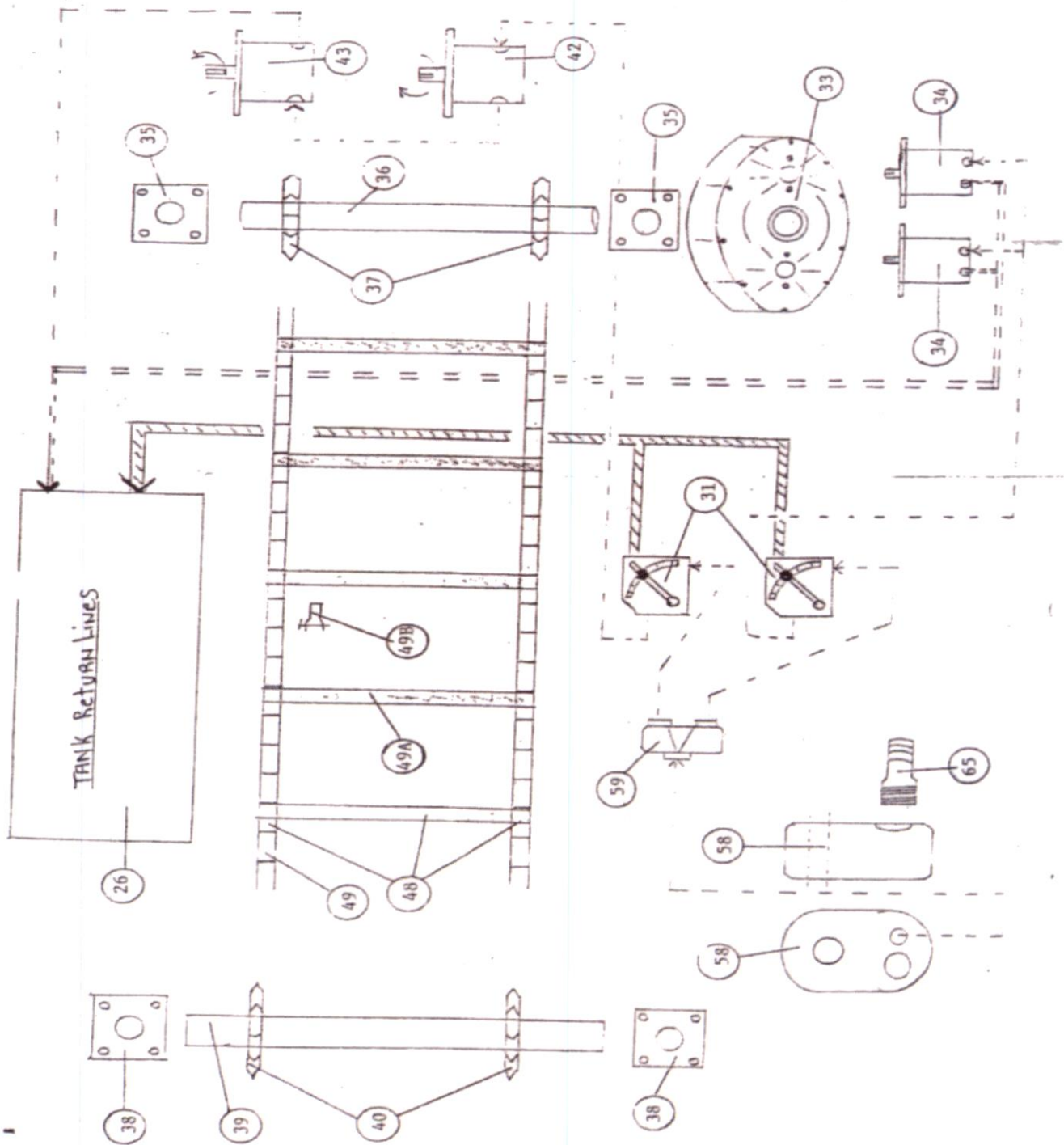




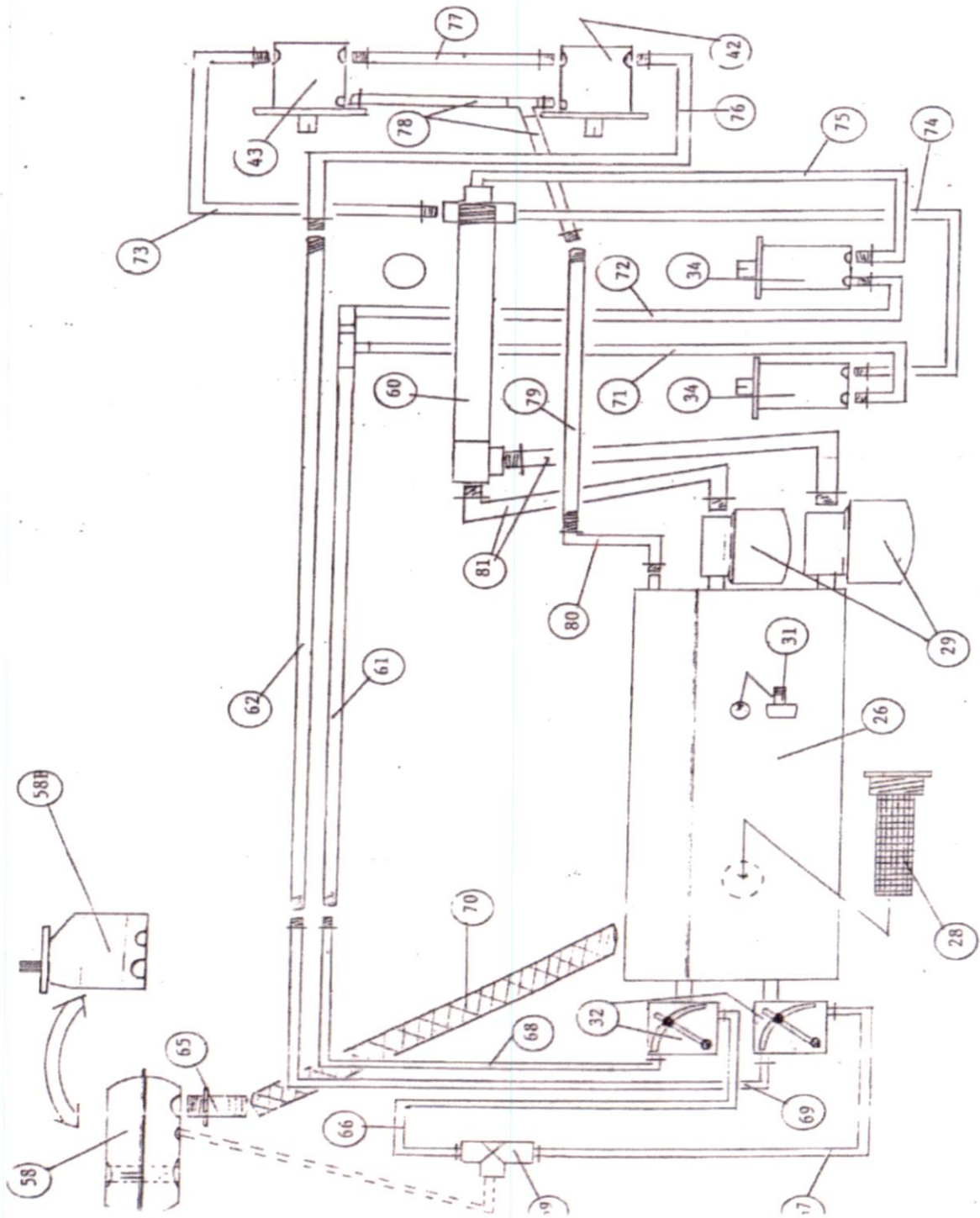
# ADAMS CLS-00



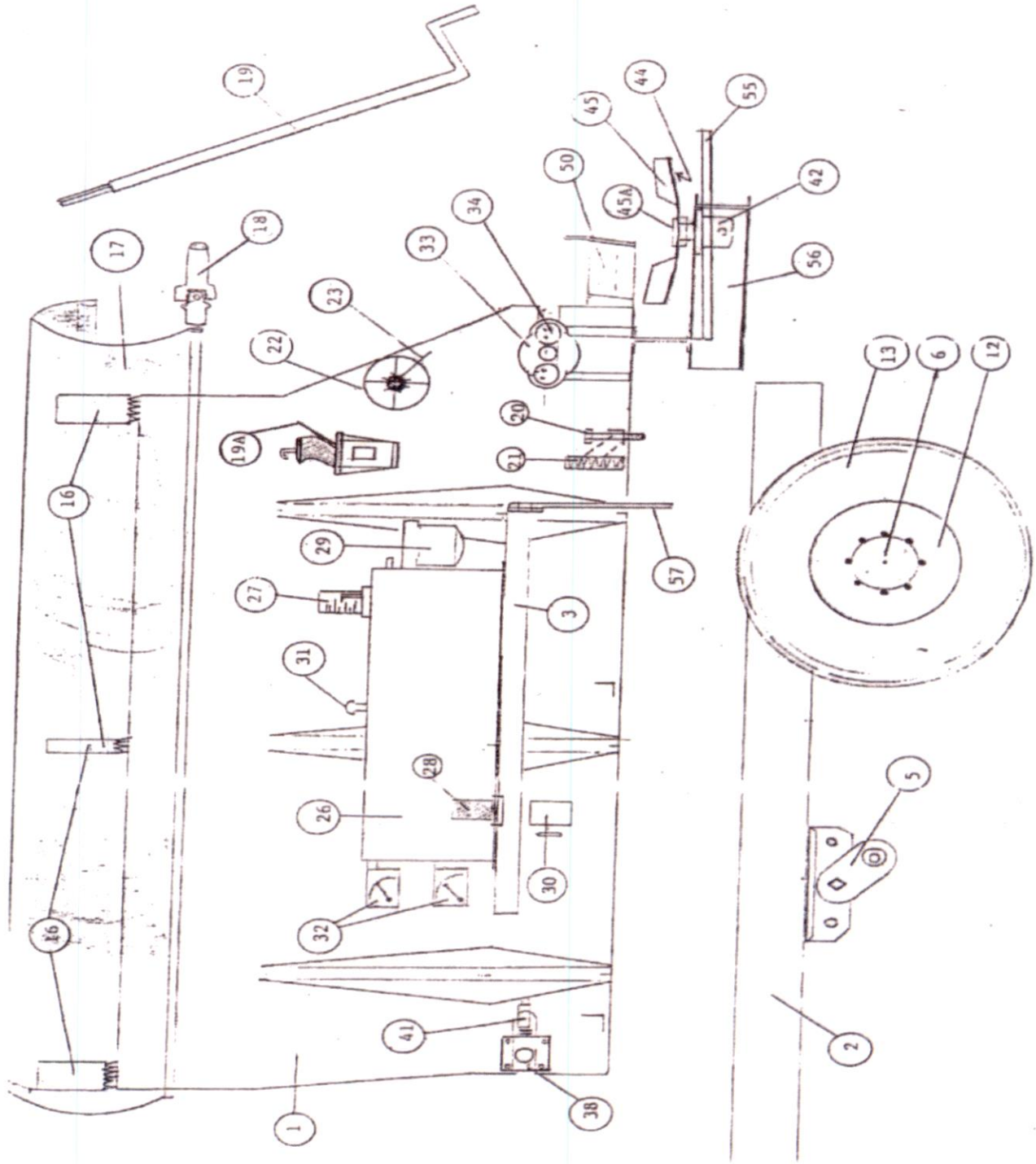
# ADAMS CLS-00



# ADAMS CLS-00



# ADAMS CLS-00



# ADAMS CLS-00

DRAWING #	PART #	DESCRIPTION
1	CLS-001	MAIN HOPPER ASSEMBLY 12', 14', 16', 18', 20', 24'
2	CLS-002	MAIN UNDER CARRIAGE FRAME (PULL TYPE)
2A	CLS-002A	HITCH ASSEMBLY (6 BOLT)
3	CLS-003	LEFT HAND FENDER
4	CLS-004	RIGHT HAND FENDER
5	CLS-005	10,000# AXLE ASSEMBLY WITH HUBS
5A	CLS-005A	10,000# AXLE ASSEMBLY LESS HUBS
6	CLS-006	60-8 HUB ASSEMBLY COMPLETE
6A	CLS-006A	60-8 HUB ONLY
7	CLS-007	SMALL BEARING/RACE
8	CLS-008	LARGE BEARING/RACE
9	CLS-009	SEAL
10	CLS-010	LUG NUT 5/8"
11	CLS-011	DUST CAP
11A	CLS-011A	SPINDLE NUT/WASHER
12	CLS-012	10 X 15 6-HOLE WHEEL 10'-12'
12A	CLS-012A	11 X 16.1 8-HOLE 14'-16'
12B	CLS-012B	16 X 16.1 8-HOLE 18'-24'
13	CLS-013	12.5L-15 TIRE 10'-12' HOPPER
13A	CLS-013A	16.5-16.1 tire 14'-16' HOPPER
13B	CLS-013B	19L-16 TIRE 18'-24' HOPPER
14	CLS-014	4X4 SQUARE JACK WITH BOLT PLATE
15	CLS-015	JACK HANDLE
16	CLS-016	MILD STEEL TARP RAMP KIT (OPTIONAL)
17	CLS-017	22 OZ. ROLL TARP (SPECIFY LENGTH)
18	CLS-018	ROLL TARP U JOINT ASSEMBLY
19	CLS-019	ROLL TARP HANDLE
19A	CLS-019A	ROLL TARP RATCHET WITH HOOK
20	CLS-020	5/8 X 4 1/2" ANCHOR BOLT & LOCK NUT
21	CLS-021	ANCHOR MOUNT SPRING
22	CLS-022	DOOR HANDLE & SHAFT
23	CLS-023	DOOR HANDLE LATCH COG
24	CLS-024	DOOR HANDLE LATCH & MOUNT SPOOL
25	CLS-025	DOOR SHAFT MOUNT BUSHING
26	CLS-026	HYDRAULIC RESERVOIR TANK (SPECIFY FRONT OR SIDE MOUNT)
27	CLS-027	FLUID LEVEL GAUGE
28	CLS-028	3" SUSCTION STRAINER
29	CLS-029	RETURN FILTER ASSEMBLY
29A	CLS-029A	RETURN FILTER ONLY
30	CLS-030	2" GATE VALVE
31	CLS-031	3/4" BREATHER CAP
32	CLS-032	3/4"FCR-51 FLOW CONTROL VALVE
33	CLS-033	TWIN DRIVE GEAR REDUCTION BOX

## ADAMS CLS-00

34	CLS-034	HYDRAULIC DRIVE MOTORS
35	CLS-035	2" 4-BOLT FLANGE BEARING
36	CLS-036	REAR DRAG CHAIN POWER SHAFT & SPROCKET ASSEMBLY
37	CLS-037	REAR POWER SHAFT SPROCKET ONLY
38	CLS-038	1 1/2" 4-BOLT FLANGE BEARING
39	CLS-039	FRONT IDLER SHAFT & SPROCKET ASSEMBLY
40	CLS-040	FRONT IDLER SPROCKET ONLY
41	CLS-041	FRONT IDLER ADJUSTER & BOLT
42	CLS-042	LEFT HAND HYDRAULIC FAN MOTOR
43	CLS-043	RIGHT HAND HYDRAULIC FAN MOTOR
44	CLS-044	LEFT HAND ASSEMBLY
45	CLS-045	LEFT HAND FAN FIN
45A	CLS-045A	P1-1 FAN HUB BUSHING
46	CLS-046	RIGHT HAND FAN ASSEMBLY
47	CLS-047	RIGHT HAND FAN FIN
48	CLS-048	COMPLETE FLOOR CHAIN ASSEMBLY (SPECIFY LENGTHS)
49	CLS-049	D667X PINTLE CHAIN ONLY (NO BARS) (SPECIFY LENGTH)
49A	CLS-049A	38 X 1 1/4 DRAG CHAIN BARS 28 1/4" LONG
49B	CLS-049B	DRAG CHAIN CONNECTING LINK
50	CLS-050	ADJUSTABLE DOVE TAIL
51	CLS-051	COMPLETE HOPPER DOOR WITH TRAC
51A	CLS-051A	STAINLESS STEEL DOOR MARKER GUAGE
52	CLS-052	R 6X6 DOR GEAR TRAC
53	CLS-053	1" DOOR PINION GEARS
54	CLS-054	FRONT DEFLECTOR SKIRT
55	CLS-055	FAN SAFETY GUARD RAIL
56	CLS-056	FAN MOUNT TAIL ASSEMBLY
56A	CLS-056A	FAN MOUNT TAIL ASSEMBLY COMPLETE
57	CLS-057	MUD FLAPS
58	CLS-058	HYDRAULIC PTO PUMP 1000 RPM
58A	CLS-058A	HYDRAULIC PTO PUMP 540 RPM
58B	CLS-058B	TRUCK MOUNT HDRAULIC PUMP
59	CLS-059	50/50 HYDRAULIC SPLITTER VALVE
59A	CLS-059A	70/30 HYDRAULIC SPLITTER VALVE
60	CLS-060	1 1/2 HYDRAULIC RETURN PIPE
61	CLS-061	1" HYDRAULIC PRESSURE PIPE
62	CLS-062	1" HYDRAULIC PRESSURE PIPE
63	CLS-063	1" PIPE CLAMP MOUNT ASSEMBLY
64	CLS-064	1 1/2" PIPE CLAMP MOUNT ASSEMBLY
65	CLS-065	2" HB-O'RING HOLE BARB
66	CLS-066	3/4" HYDRAULIC HOSE SPLITTER/FLOW CONTROL (CHAIN)
67	CLS-067	3/4" HYDRAULIC HOSE SPLITTER/FLOW CONTROL (FANS)
68	CLS-068	3/4" HYDRAULIC HOSE FLOW CONTROL/PRESSURE PIPE
69	CLS-069	3/4" HYDRAULIC HOSE FLOW CONTROL/PRESSURE PIPE
70	CLS-070	2" HYDRAULIC SUCTION HOSE
71	CLS-071	1/2" HYDRAULIC HOSE PIPE/GEAR MOTOR
72	CLS-072	1/2" HYDRAULIC HOSE PIPE/GEAR MOTOR

## ADAMS CLS-00

73	CLS-073	3/4" HYDRAULIC HOSE RETURN LINE (FAN MOTOR)
74	CLS-074	1/2" HYDRAULIC HOSE RETURN LINE (GEAR MOTOR)
75	CLS-075	1/2" HYDRAULIC HOSE RETURN LINE (GEAR MOTOR)
76	CLS-076	3/4" HYDRAULIC HOSE PRESSURE PIPE TO FAN MOTOR
77	CLS-077	3/4" HYDRAULIC HOSE FAN MOTOR/FAN MOTOR
78	CLS-078	3/8" HYDRAULIC HOSE RETURN LINE FOR CASE DRAIN
79	CLS-079	3/8" PPIPE RETURN FOR CASE DRAIN
80	CLS-080	3/8" HYDRAULIC HOSE PIPE TO TANK
81	CLS-081	3/4" HYDRAULIC HOSE RETURN PIPE TO TANK